

www.maestrisrl.com

OFFICINE MECCANICHE

MAESTRI

INTEGRATION



GREASE

OIL

DIESEL

ANTI FREEZE

UREA

ACCESSORIES

SPARE PARTS



Mod. **NEWI22/EXP**
Special grease gun stand
for screw cartridges
"PROFESSIONAL SYSTEM"
and special coupler Mod.444/BLK



Mod. **NEWI23/EXP**
Special grease gun stand
for screw cartridges
"PROFESSIONAL SYSTEM"
and special coupler Mod.444/BLK

Ready for the exhibition .The total price is the sum of the items as per the current price list, stand free of charge.
It is not possible to order the stand separately or with different items on it.

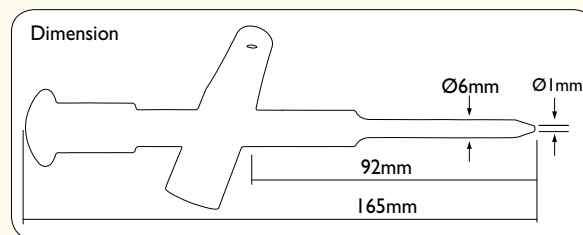


Ready for the exhibition. The total price is the sum of the couplers, stand free of charge. With free of charge stand, 300mm flexible hose and one special coupler. It is not possible to order the stand separately or with different items on it.

**100
bar**



Mod. **KIT/I25ML**
Injection gun kit
complete with 125ml grease tube



Technical data:

INJECTION GUN KIT (KIT/I25/05)

- Max pressure 100Bar
- Thread M15 X 1.5
- Flow rate 0,27ml/stroke
- Spout internal hole 1mm

125ml GREASE TUBE (GRS125ML)

- Semi synthetic PTFE
- Drop point: > 185°C
- Working temperature: from -20°C to +130°C
- Thread M15 X 1,5

**100
bar**



Mod. **KIT/I25/05**
Injection gun
Only gun without grease tube
(thread M15x1,5)



**NEW
14.4V
LITHIUM**



Mod. 664/LITIO

14.4V GREASE LITHIUM BATTERY KIT

- 500g Bulk manual and 400g cartridge refill
- 2 14.4V LITHIUM BATTERIES
- 1 battery charger
- 1 Flexible hose 1000bar with spring 500mm and 4 jaw fittings
- Plastic suitcase

Mod. 665/LITIO

14.4V GREASE LITHIUM BATTERY KIT

- 800g Bulk manual and 550g cartridge refill
- 2 14.4V LITHIUM BATTERIES
- 1 battery charger
- 1 Flexible hose 1000bar with spring 500mm and 4 jaw fittings
- Plastic suitcase

Mod. 666/LITIO

14.4V GREASE LITHIUM BATTERY KIT

- 1000g Bulk manual and 600g cartridge refill
- 2 14.4V LITHIUM BATTERIES
- 1 battery charger
- 1 Flexible hose 1000bar with spring 500mm and 4 jaw fittings
- Plastic suitcase

**400
bar**

**NEW
18V
LITHIUM**



Mod. 668/LITIO

18V GREASE LITHIUM BATTERY KIT

- 500g Bulk manual and 400g cartridge refill
- 2 18V LITHIUM BATTERIES
- 1 battery charger
- 1 Flexible hose 1000bar with spring 500mm and 4 jaw fittings
- Plastic suitcase

Mod. 669/LITIO

18V GREASE LITHIUM BATTERY KIT

- 800g Bulk manual and 550g cartridge refill
- 2 18V LITHIUM BATTERIES
- 1 battery charger
- 1 Flexible hose 1000bar with spring 500mm and 4 jaw fittings
- Plastic suitcase

Mod. 670/LITIO

18V GREASE LITHIUM BATTERY KIT

- 1000g Bulk manual and 600g cartridge refill
- 2 18V LITHIUM BATTERIES
- 1 battery charger
- 1 Flexible hose 1000bar with spring 500mm and 4 jaw fittings
- Plastic suitcase

**600
bar**



14.4V GREASE LITHIUM BATTERY KIT

for "SPEEDY GREASE" and SCREW CARTRIDGES

**400
bar**



**14.4V
LITHIUM**

**SPEEDY GREASE®
system**
MADE IN ITALY

**NEW
14.4V
LITHIUM**

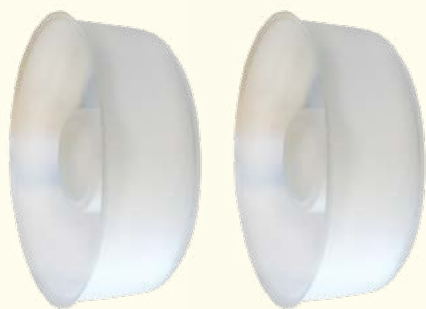
Mod. 664/SPEEDY/LITIO

14.4V GREASE LITHIUM BATTERY KIT

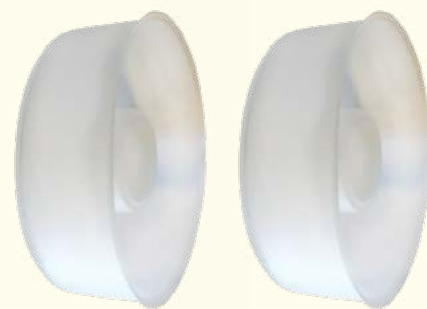
For 400ml and 400g cartridges.

Complete with 400ml MAX cartridge, 2 LITHIUM 14.4V batteries, battery charger, 500mm flexible hose with spring and 4 jaw fittings, 5 Plastic plate and plastic suit case.

Aluminum special adapter for 400g screw cartridges



Mod. 114/SP/M
**Plastic plate for 400ml
and 400g cartridges**



18V GREASE LITHIUM BATTERY KIT

for "SPEEDY GREASE" and SCREW CARTRIDGES



SPEEDY GREASE®
system
MADE IN ITALY

NEW
18V
LITHIUM

Mod. 668/SPEEDY/LITIO

18V GREASE LITHIUM BATTERY KIT

For 400ml and 400g cartridges.

Complete with 400ml MAX cartridge, 2 LITHIUM 18V batteries, battery charger, 500mm flexible hose with spring and 4 jaw fittings, 5 Plastic plate and plastic suit case.

Aluminum special adapter for 400g screw cartridges

Cartridge insertion instructions:

cartridge loading: Mod. 114/SPEEDY-400 e Mod. 114/SPEEDY-MAX



**Mod. 800/N****Manual pump without discharge hose**

- 2" ring nut
- 2"F-56x4M and 2"F-70x6M adapters

**Mod. 800/C****Manual pump complete**

- 2.5m discharge hose and spout
- 2" ring nut
- 2"F-56x4M and 2"F-70x6M adapters

Mod. 800/CP**Manual pump complete**

- 2.5m discharge hose and nozzle
- 2" ring nut
- 2"F-56x4M and 2"F-70x6M adapters

Mod. 800/CPC**Manual pump complete**

- 2.5m discharge hose
- nozzle with electronic flow meter
- 2" ring nut
- 2"F-56x4M and 2"F-70x6M adapters

**8 L/MIN.
(0.13L/STROKE)**

Single effect alternative volumetric manual pumps built in carbon steel with aluminum components and Viton® seals. Performances detected in the laboratory under the following conditions: Hydraulic oil ISO32 viscosity at 22°C. Flow rates detected at free passage.



**Mod. 80I/N****Manual pump without discharge hose**

- 2" ring nut
- 2"F-56x4M and 2"F-70x6M adapters

**Mod. 80I/C****Manual pump complete**

- 2.5m discharge hose and spout
- 2" ring nut
- 2"F-56x4M and 2"F-70x6M adapters

**Mod. 80I/CP****Manual pump complete**

- 2.5m discharge hose and nozzle
- 2" ring nut
- 2"F-56x4M and 2"F-70x6M adapters

Mod. 80I/CPC**Manual pump complete**

- 2.5m discharge hose
- nozzle with electronic flow meter
- 2" ring nut
- 2"F-56x4M and 2"F-70x6M adapters

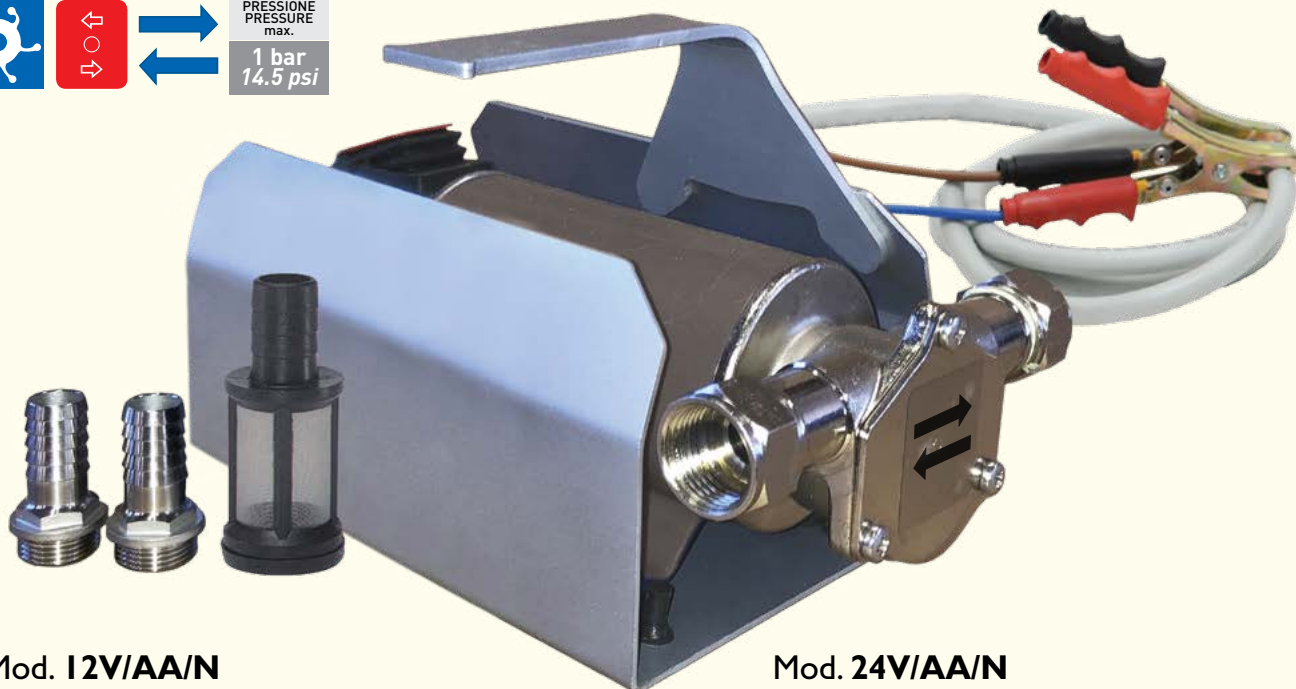
**16 L/MIN.
(0.23L/STROKE)**

Single effect alternative volumetric manual pumps built in carbon steel with aluminum components and Viton® seals. Performances detected in the laboratory under the following conditions: Hydraulic oil ISO32 viscosity at 22°C. Flow rates detected at free passage.





PRESSIONE
PRESSURE
max.
1 bar
14.5 psi



Mod. 12V/AA/N

12V Electric pump (25L/Min)

For water and anti freeze
con 3m electric cable, clamps,
Reversible impeller ON/OFF switch,
INOX hose connectors and filters
INLET/OUTLET: 1/2" BSP

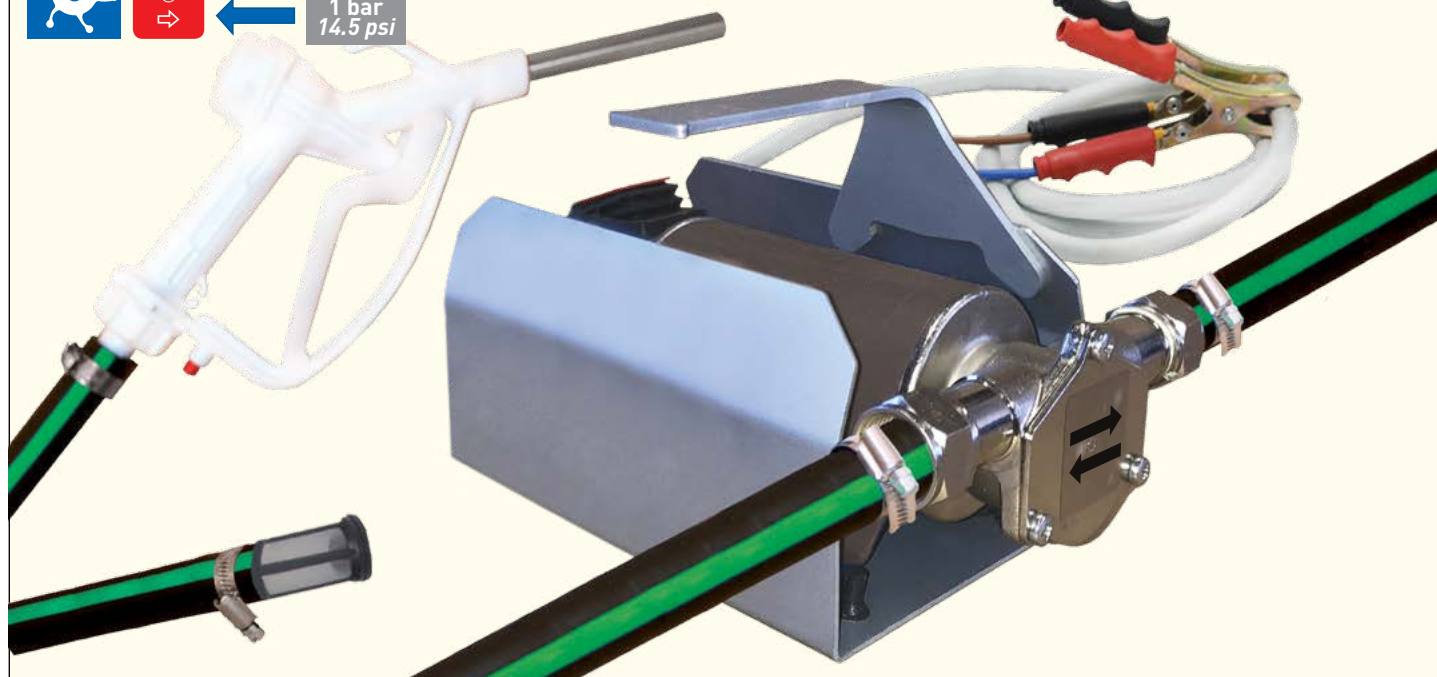
Mod. 24V/AA/N

24V Electric pump (25L/Min)

For water and anti freeze
con 3m electric cable, clamps,
Reversible impeller ON/OFF switch,
INOX hose connectors and filters
INLET/OUTLET: 1/2" BSP



PRESSIONE
PRESSURE
max.
1 bar
14.5 psi



Mod. 12V/AA/C

12V Electric pump complete (15L/Min)

For water and anti freeze
• 2.5m suction hose with filter
• 2.5m discharge hose with manual nozzle

Mod. 24V/AA/C

24V Electric pump complete (15L/Min)

For water and anti freeze
• 2.5m suction hose with filter
• 2.5m discharge hose with manual nozzle



Mod. 12V/AA/C/F

12V Electric pump complete (15L/Min)

For 200 liter drums and 1000 liter IBC drums
For water and anti freeze

- with rigid suction pipe and filter
- 2" ring nut
- 2"F-56x4M and 2"F-70x6M adapters
- 2.5m discharge hose with manual nozzle

Mod. 24V/AA/C/F

24V Electric pump complete (15L/Min)

For 200 liter drums and 1000 liter IBC drums
For water and anti freeze

- with rigid suction pipe and filter
- 2" ring nut
- 2"F-56x4M and 2"F-70x6M adapters
- 2.5m discharge hose with manual nozzle



PRESSIONE
PRESSURE
max.

1 bar
14.5 psi

Mod. 12V/AA/GIR

Spare rubber impeller



Technical data:

Volt	Max suction w/valve	Watt	Fuse	In/Out	Nominal flow rate	Flow rate (no accessories)	Flow rate (pump complete)
12	2.5m	150	10 A	1/2"BSP	28 L/Min	25 L/Min	15 L/Min
24	2.5m	150	7.5 A	1/2"BSP	28 L/Min	25 L/Min	15 L/Min

IP65 PROTECTION - The rubber impeller can tolerate impurities (max 5 mm), but not abrasive particles.
Motor protection fuse - The pump can be installed in any position. Operating temperature: min. -10°C / max. 60°C. Do not use for gasoline, corrosive chemical products and alimentary fluids. The pump must be switched off within 2-3 minutes if the motor is running and the gun is closed. Duty cycle: max 20 min.

SELF-PRIMING ELECTRIC 220V DIAPHRAGM PUMP

for WATER and ANTI FREEZE - 35 L/Min.



Mod. 5000/N
220V electric pump (35L/Min.)
for WATER and ANTI FREEZE



Mod. 5000/AA/C
220V electric pump complete (35L/Min.)
for WATER and ANTI FREEZE

- 2.5m suction hose and foot valve
- 2.5m discharge hose with manual nozzle

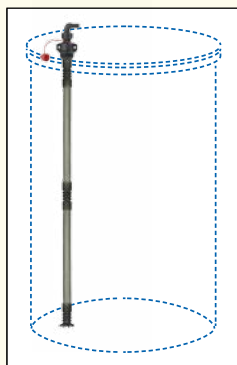
Technical data:

max pressure: 1,5bar - 1450rpm - 400 Watt

SELF-PRIMING ELECTRIC 220V DIAPHRAGM PUMP - 2m electric cable and On/Off switch

Mod. 5000/AA/DGT/C
220V electric pump complete (35L/Min.)
for WATER and ANTI FREEZE

- Electronic flow meter (Mod. DGT3000)
- 2.5m suction hose and foot valve
- 2.5m discharge hose with manual nozzle

ANTI FREEZE**12V e 24V****220V****Mod. 4050/AA/12C****12V Electric pump complete**

for water and anti freeze for 200L drums

- 1m hose and suction kit
- 2,5m discharge hose
- Plastic manul nozzle
- INOX base for 200L drums

Mod. 4050/AA/24C**24V Electric pump complete**

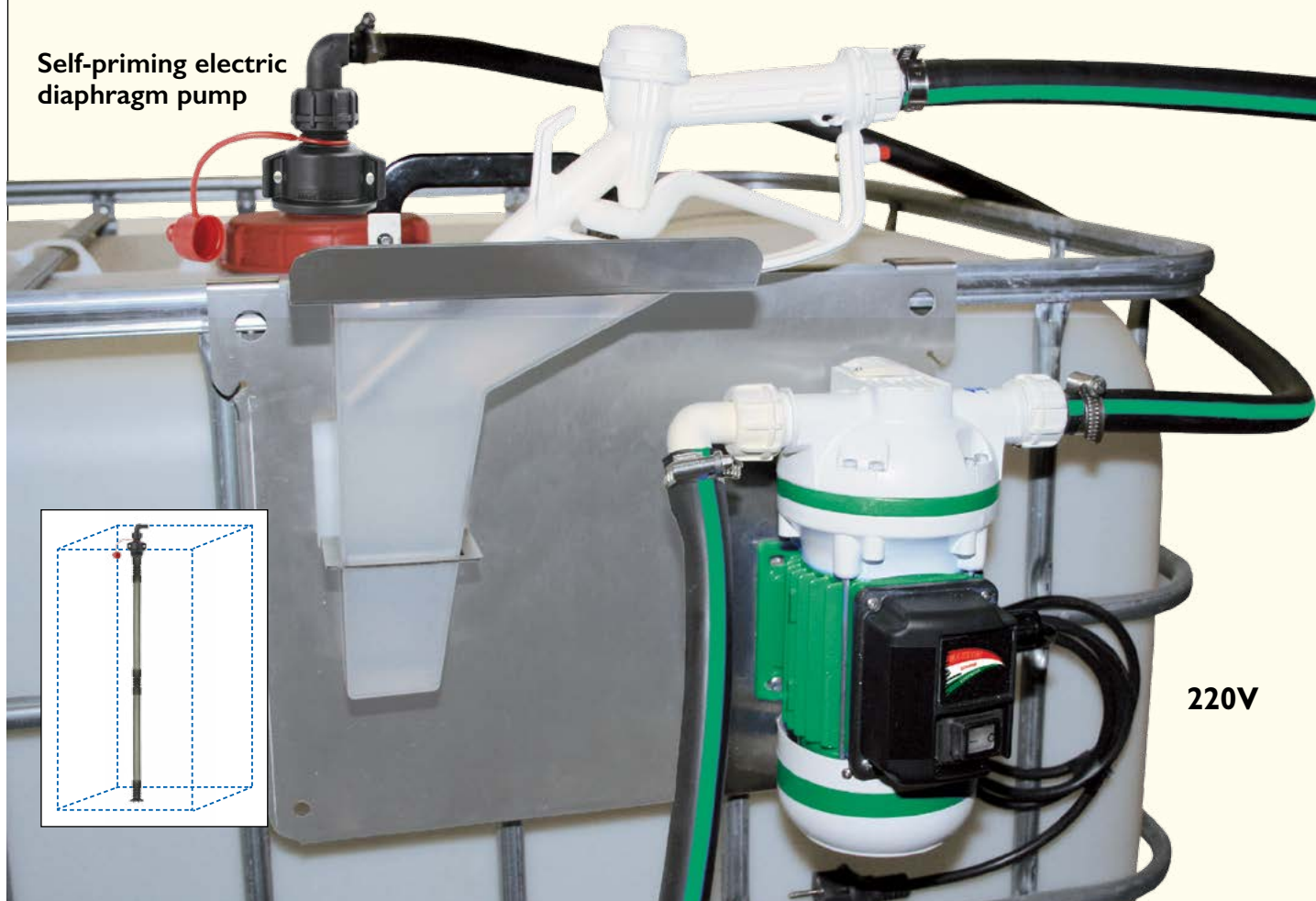
for water and anti freeze for 200L drums

- 1m hose and suction kit
- 2,5m discharge hose
- Plastic manul nozzle
- INOX base for 200L drums

Mod. 5050/AA/C**220V Electric pump complete**

for water and anti freeze for 200L drums

- 1m hose and suction kit
- 2,5m discharge hose
- Plastic manul nozzle
- INOX base for 200L drums

ANTI FREEZE**12V e 24V**Self-priming electric
diaphragm pump**220V****Mod. 4100/AA/12C****12V Electric pump complete**

for water and anti freeze for 1000 liter drums

- 1,5m hose and suction kit
- 4m discharge hose
- Plastic manul nozzle
- INOX base for 1000L drums

Mod. 4100/AA/24C**24V Electric pump complete**

for water and anti freeze for 1000 liter drums

- 1,5m hose and suction kit
- 4m discharge hose
- Plastic manul nozzle
- INOX base for 1000L drums

Mod. 5100/AA/C**220V Electric pump complete**

for water and anti freeze for 1000 liter drums

- 1,5m hose and suction kit
- 4m discharge hose
- Plastic manul nozzle
- INOX base for 1000L drums

ANTI FREEZE**12V e 24V**Self-priming electric
diaphragm pump**220V****Mod. 4200/AA/12C****12V Electric pump complete**

for water and anti freeze for 1000 liter drums

- Electronic flow meter
- 1,5m hose and suction kit
- 4m discharge hose
- Automatic nozzle
- INOX base for 1000L drums

Mod. 4200/AA/24C**24V Electric pump complete**

for water and anti freeze for 1000 liter drums

- Electronic flow meter
- 1,5m hose and suction kit
- 4m discharge hose
- Automatic nozzle
- INOX base for 1000L drums

Mod. 5200/AA/C**220V Electric pump complete**

for water and anti freeze for 1000 liter drums

- Electronic flow meter
- 1,5m hose and suction kit
- 4m discharge hose
- Automatic nozzle
- INOX base for 1000L drums

ANTI FREEZE**12V e 24V**Self-priming electric
diaphragm pump**SUCTION:**
from the lower cap**220V****Mod. 4150/AA/12C****12V Electric pump complete**

for water and anti freeze for 1000 liter drums

- 2m suction hose with 60x6F connector for lower tank tap
- 4m discharge hose
- Plastic manul nozzle
- INOX base for 1000L drums

Mod. 4150/AA/24C**24V Electric pump complete**

for water and anti freeze for 1000 liter drums

- 2m suction hose with 60x6F connector for lower tank tap
- 4m discharge hose
- Plastic manul nozzle
- INOX base for 1000L drums

Mod. 5150/AA/C**220V Electric pump complete**

for water and anti freeze for 1000 liter drums

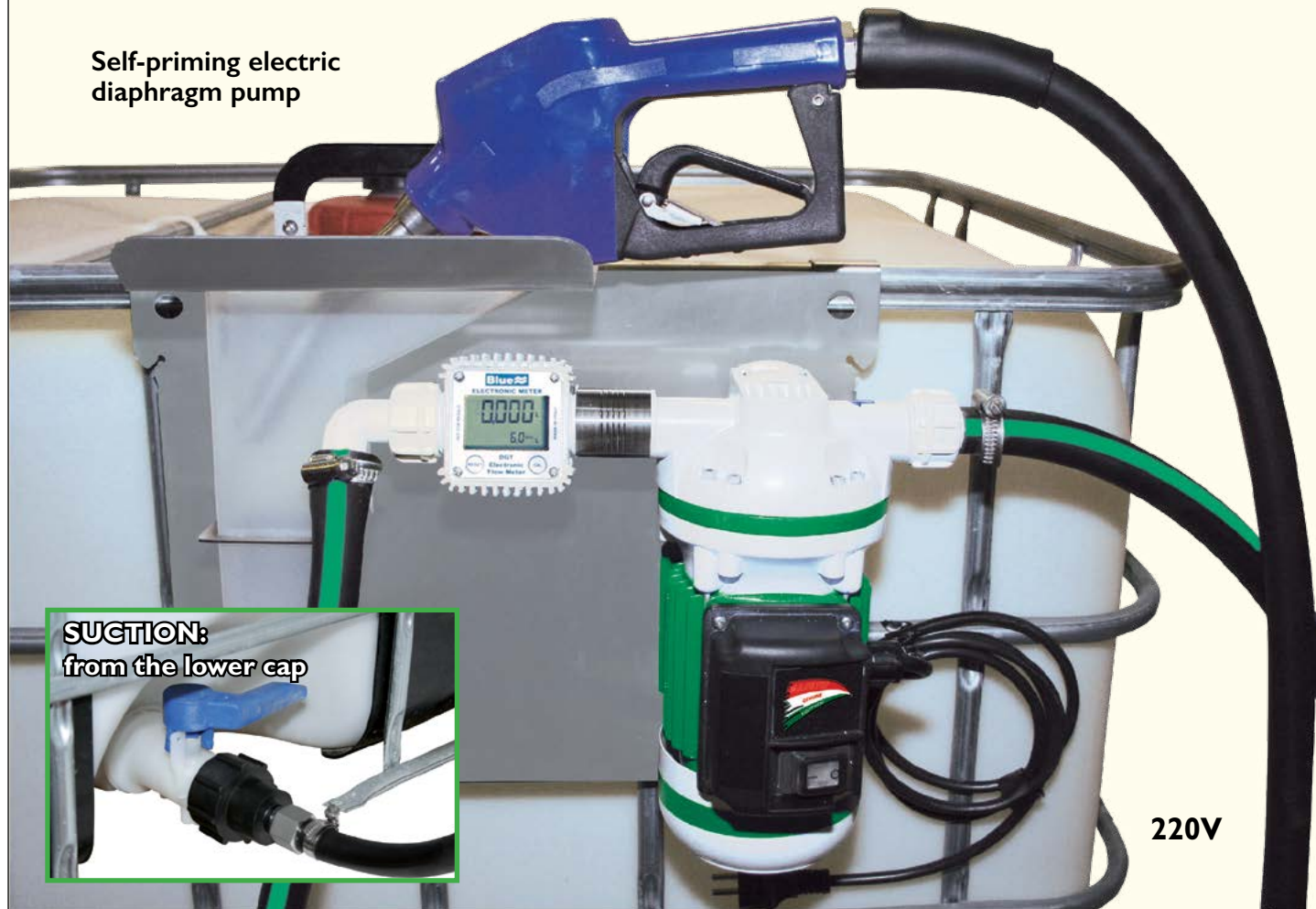
- 2m suction hose with 60x6F connector for lower tank tap
- 4m discharge hose
- Plastic manul nozzle
- INOX base for 1000L drums

ANTI FREEZE

12V e 24V



Self-priming electric diaphragm pump



SUCTION:
from the lower cap

Mod. 4250/AA/12C

12V Electric pump complete

for water and anti freeze for 1000 liter drums

- Electronic flow meter
- 2m suction hose with 60x6F connector for lower tank tap
- 4m discharge hose
- Automatic nozzle
- INOX base for 1000L drums

Mod. 4250/AA/24C

24V Electric pump complete

for water and anti freeze for 1000 liter drums

- Electronic flow meter
- 2m suction hose with 60x6F connector for lower tank tap
- 4m discharge hose
- Automatic nozzle
- INOX base for 1000L drums

Mod. 5250/AA/C

220V Electric pump complete

for water and anti freeze for 1000 liter drums

- Electronic flow meter
- 2m suction hose with 60x6F connector for lower tank tap
- 4m discharge hose
- Automatic nozzle
- INOX base for 1000L drums


Mod. PRO19/ANT

Professional hose for anti freeze
(int. diam. 19mm - ext. diam. 28mm)
roll lenght: 25m
Working pressure: 16bar


Mod. 709/AdBlue

Manual nozzle for anti freeze, water and UREA-AdBlue
With hose connector ext. diam. 20mm


Mod. 729/AdBlue

Automatic nozzle for anti freeze, water and UREA-AdBlue

- with swivel connector
 - INOX hose connector ext. diam. 20mm
- Max flow rate: 40L/Min.
(not designed for gravity use)


Mod. DGT3000

Electronic flow meter for water, anti freeze and UREA AdBlue

- Partial: 5 digits
- Total: 6 digits
- Battery: included (2X1.5V - AAA)
- Precision: $\pm 1\%$
- Flow rate min/max: 5/100 L/Min.
- Inlet: 1" M - Outlet: 1" M
- Max pressure: 20 bar
- Dimensions: 100x75x54mm
- Display dimensions: 43x27mm
- Rubber protection included

Electronic flow meter not for resale
Standard version: Inlet down - outlet up
Follow the instruction manual to change the flow.



**Mod. ANT250
ARTIC DIESEL MULTI**

Antifreeze multifunctional additive for Diesel Fuel 250ml capacity

Properties:

- Prevents the blocking of the diesel filter and reduces starting problems at low temperatures.
- Keeps the diesel injection system clean
- Increases the cetane number of diesel oil.
- Reduces smokiness, noise and optimizes consumption.
- Reduces the wear of the pump and the injectors.
- Protects from rust and corrosion.
- It performs a biocidal action against algae and micro-organisms present in the tank.
- Compatible with all exhaust systems.
- The 250 ml single dose bottle treats 70 liters of diesel.
- Dosage and filterability limit temperature - 22 °C
- The 250 ml single dose bottle treats 100 liters of diesel.
- Dosage and filterability limit temperature - 16 °C

**Mod.DAF1000
DIESEL ANTI-FREEZE**

Antifreeze additive for Diesel Fuel 1000ml capacity

**Mod.DAF125
DIESEL ANTI-FREEZE**

Antifreeze additive for Diesel Fuel - 125ml capacity

Properties:

- Prevents blocking the fuel filter at low temperatures.
- Reduces starting problems due to frost.
- Prevents the formation of paraffin crystals in the diesel.
- Avoid the accumulation of paraffin crystals in the tank.

1 liter additive per 1000 liter diesel:

Dosage and filterability limit temperature - 12 °C

1 liter additive per 500 liter diesel:

Dosage and filterability limit temperature - 18 °C

1 liter additive per 200 liter diesel:

Dosage and filterability limit temperature - 24 °C

125-ml single-dose bottle is suitable for a tank of mid-size vehicle (50 liters),

Dosage and filterability limit temperature - 20 °C

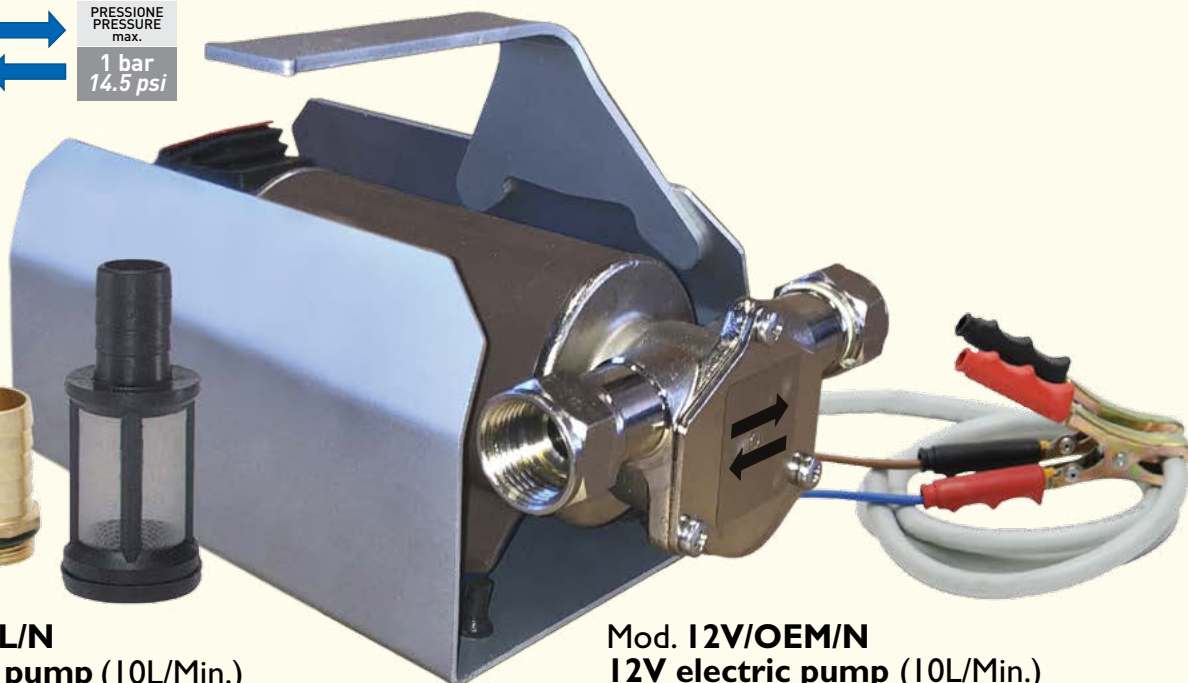




PRESSIONE
PRESSURE
max.
1 bar
14.5 psi



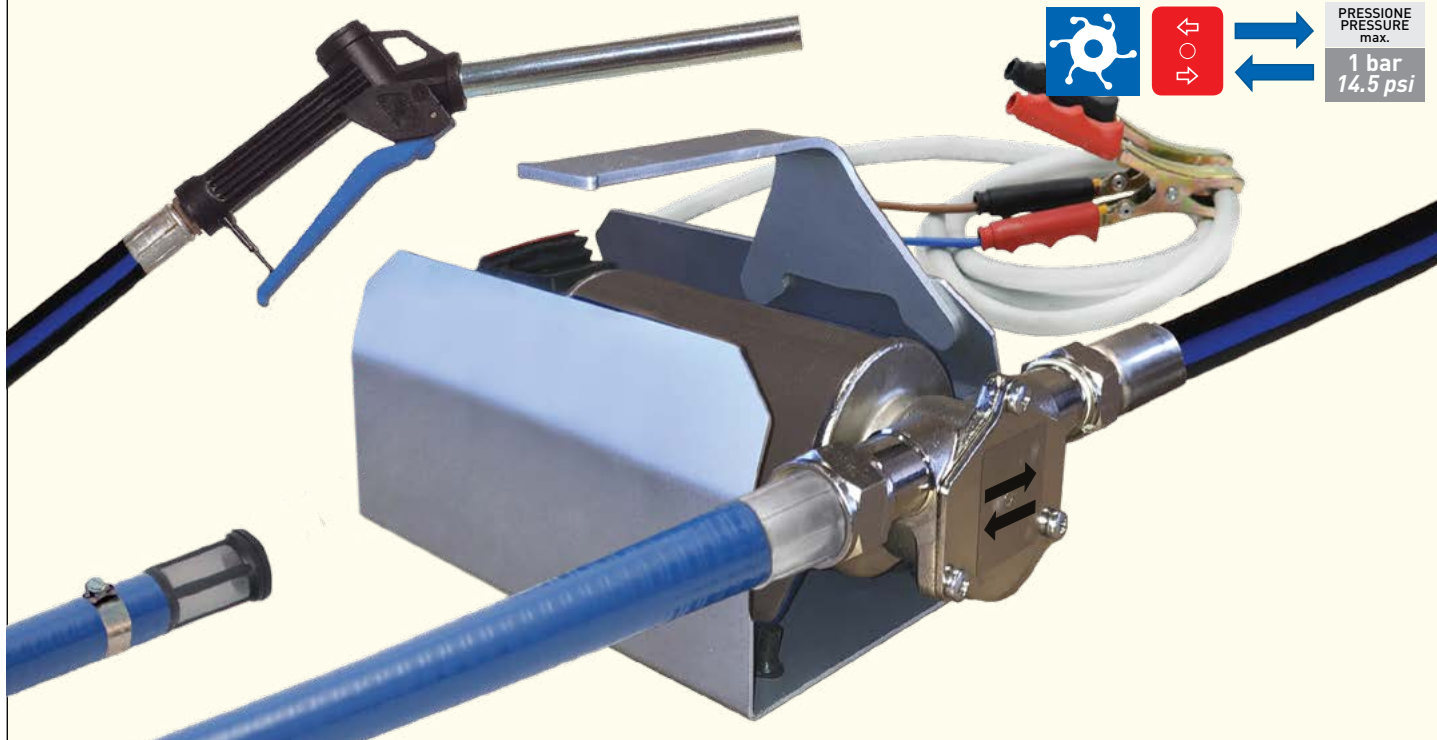
Mod. 12V/OIL/N
12V electric pump (10L/Min.)
for oil and waste oil
with 3m electric cable, clamps,
Reversible impeller ON/OFF switch,
Hose connectors and filter
(24V NOT AVAILABLE)



Mod. 12V/OEM/N
12V electric pump (10L/Min.)
For water-mixable oil
with 3m electric cable, clamps,
Reversible impeller ON/OFF switch,
INOX hose connectors and filter
(24V NOT AVAILABLE)



PRESSIONE
PRESSURE
max.
1 bar
14.5 psi



Mod. 12V/OIL/C
12V electric pump complete (10L/Min.)
for oil and waste oil
• 2.5m suction hose and filter
• 2.5m discharge hose with manual nozzle
(24V NOT AVAILABLE)

Mod. 12V/OEM/C
12V electric pump complete (10L/Min.)
For water-mixable oil
• 2.5m suction hose and filter
• 2.5m discharge hose with manual nozzle
(24V NOT AVAILABLE)



Mod. 12V/OIL/C/F
12V electric pump complete (15L/Min.)
 For 200L and 1000L IBC drums
 for oil and waste oil

- with rigid suction pipe and filter
- 2" ring nut
- 2"F-56x4M and 2"F-70x6M adapters
- 2.5m discharge hose with manual nozzle

(24V NOT AVAILABLE)

Mod. 12V/OEM/C/F
12V electric pump complete (15L/Min.)
 For 200L and 1000L IBC drums
 For water-mixable oil

- with rigid suction pipe and filter
- 2" ring nut
- 2"F-56x4M and 2"F-70x6M adapters
- 2.5m discharge hose with manual nozzle

(24V NOT AVAILABLE)



PRESSIONE
 PRESSURE
 max.
1 bar
14.5 psi

Mod. 12V/OIL/GIR
Spare rubber impeller



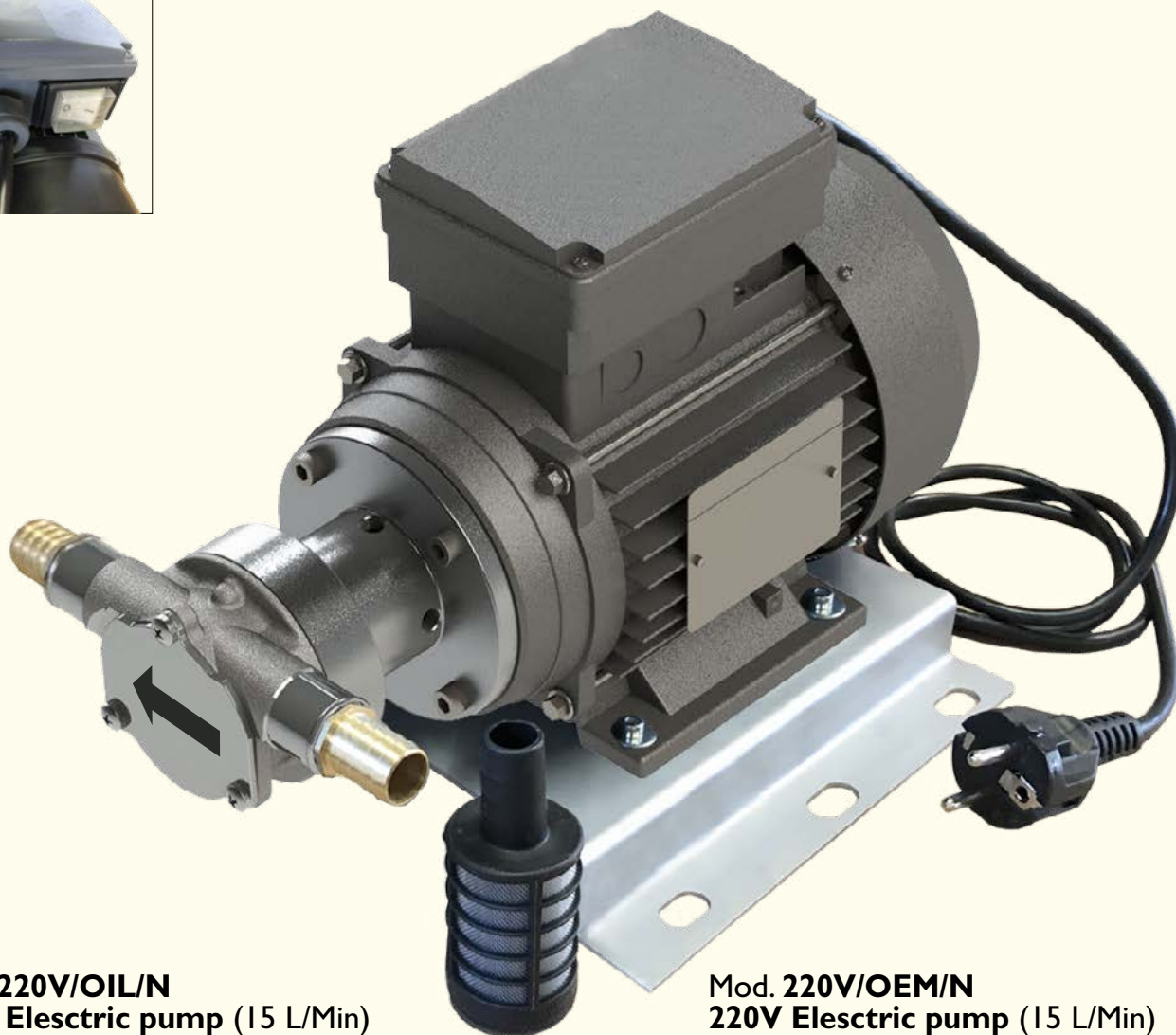
Technical data:

Volt	Max suction w/valve	Watt	Fuse	In/Out	Fluid oil flow rate	Medium density oil flow rate	High density oil flow rate
12	2.5m	150	7.5A	1/2"BSP	10L/Min	5L/Min	2L/Min

IP65 PROTECTION - The rubber impeller can tolerate impurities (max 5 mm), but not abrasive particles.

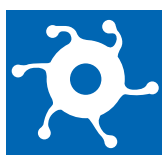
Motor protection fuse - The pump can be installed in any position.

Operating temperature: min. -10°C / max. 60°C. Do not use for gasoline, corrosive chemical products and alimentar fluids.
 The pump must be switched off within 2-3 minutes if the motor is running and the gun is closed. Duty cycle: max 20 min.



Mod. 220V/OIL/N
220V Electric pump (15 L/Min)
 for oil and waste oil
 with 1.30m electric cable, hose connectors,
 filter and fixing base
(DO NOT USE FOR DIESEL)

Mod. 220V/OEM/N
220V Electric pump (15 L/Min)
 For water-mixable oil
 with 1.30m electric cable, INOX
 hose connectors, filter and fixing base
(DO NOT USE FOR DIESEL)



PRESSIONE
 PRESSURE
 max.
1 bar
14.5 psi

Mod. 220V/OIL/GIR
Spare rubber impeller



Technical data:

Volt	Max suction w/valve	HP	A	Watt	rpm	IP	In/Out	Fluid oil flow rate	Medium density oil flow rate	High density oil flow rate
220	2.5m	0.75	3.8	550	2760	55	1/2" BSP	10L/Min	5L/Min	2L/Min

IP65 PROTECTION - The rubber impeller can tolerate impurities (max 5 mm), but not abrasive particles.

Motor protection fuse - The pump can be installed in any position.

Operating temperature: min. -10°C / max. 60°C. Do not use for gasoline, corrosive chemical products and alimentar fluids.

The pump must be switched off within 2-3 minutes if the motor is running and the gun is closed. Duty cycle: max 20 min.

SELF-PRIMING ELECTRIC 220V PUMPS NOT REVERSIBLE IMPELLER for OIL, WATER-MIXABLE OIL and WASTE OIL -15 L/Min



PRESSIONE
PRESSURE
max.

1 bar
14.5 psi

Mod. 220V/OIL/GIR
Spare rubber impeller



Technical data:

Volt	Max suction w/valve	HP	A	Watt	rpm	IP	In/Out	Fluid oil flow rate	Medium density oil flow rate	High density oil flow rate
220	2.5m	0.75	3.8	550	2760	55	1/2" BSP	10L/Min	5L/Min	2L/Min

IP65 PROTECTION - The rubber impeller can tolerate impurities (max 5 mm), but not abrasive particles.

Motor protection fuse - The pump can be installed in any position.

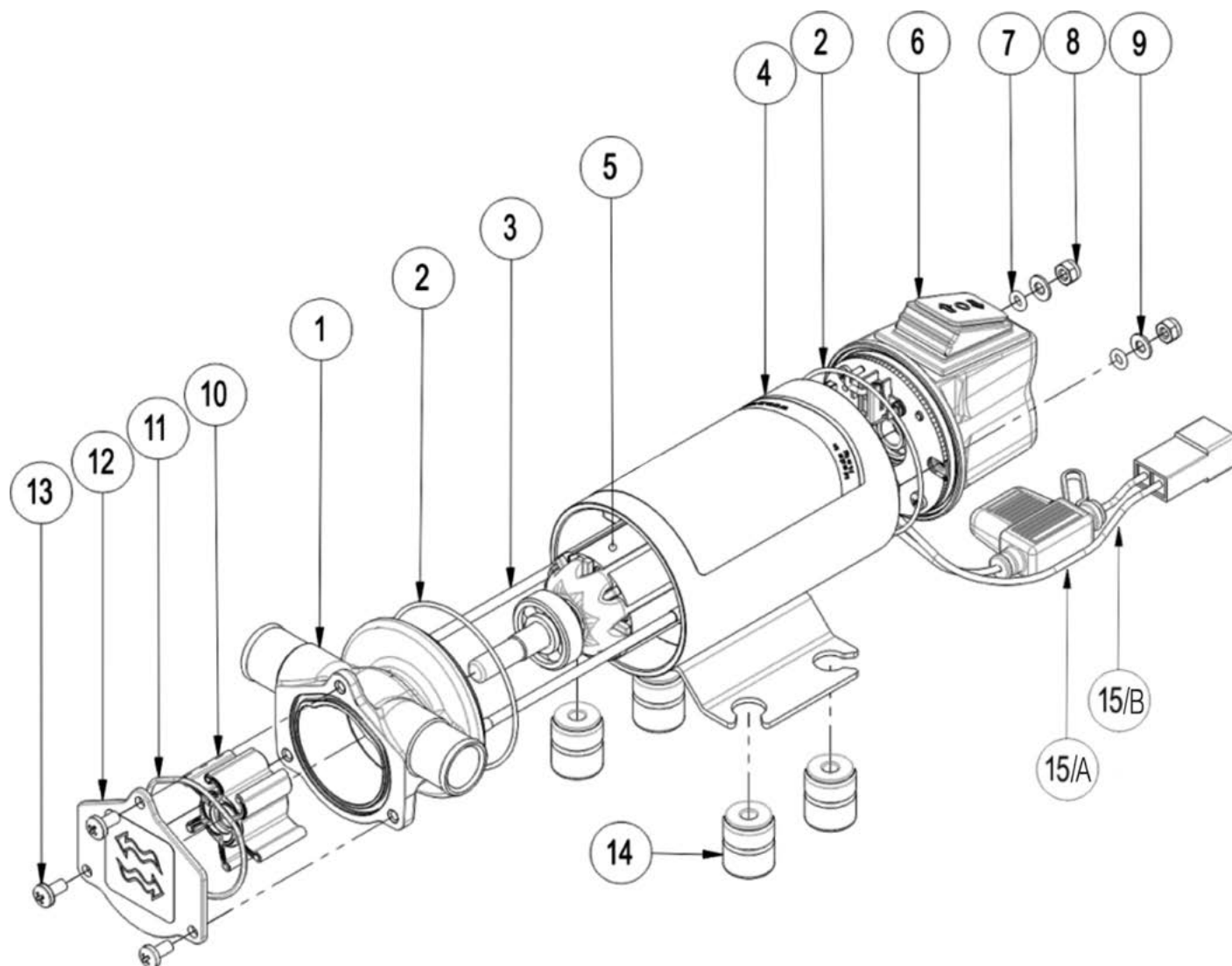
Operating temperature: min. -10°C / max. 60°C. Do not use for gasoline, corrosive chemical products and alimentar fluids.

The pump must be switched off within 2-3 minutes if the motor is running and the gun is closed. Duty cycle: max 20 min.

SELF-PRIMING ELECTRIC 12-24V

PUMPS REVERSIBLE IMPELLER

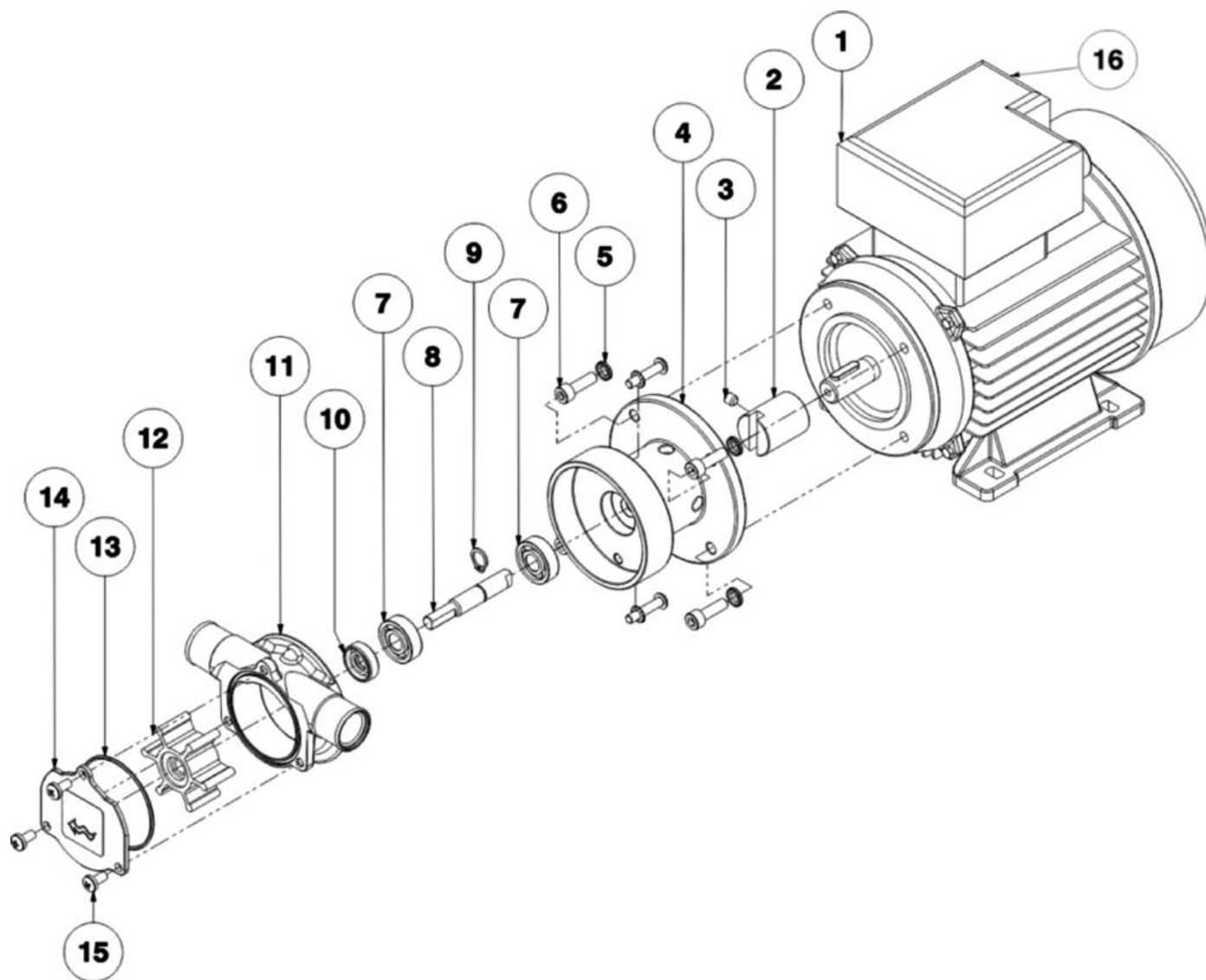
Mod. 12V/OIL/N - 12V/OIL/C - 12V/OEM/N - 12V/OEM/C - 12V/AA/N - 12V/AA/C - 24V/AA/N - 24V/AA/C
 12V/OIL/C/F - 12V/OEM/C/F - 12V/AA/C/F - 24V/AA/C/F



Pos.	Q.ty	Mod.	Description
1	1	1224V/R01	PUMP CASING
2	1	1224V/R02	O-RING
3	2	1224V/R03	ROD
4	1	1224V/R04	MOTOR CHASSIS
5	1	1224V/R05	INTERNAL MOTOR
6	1	1224V/R06	CAP+SWITCH
7	2	1224V/R07	O-RING
8	2	1224V/R08	NUT
9	2	1224V/R09	WASHER

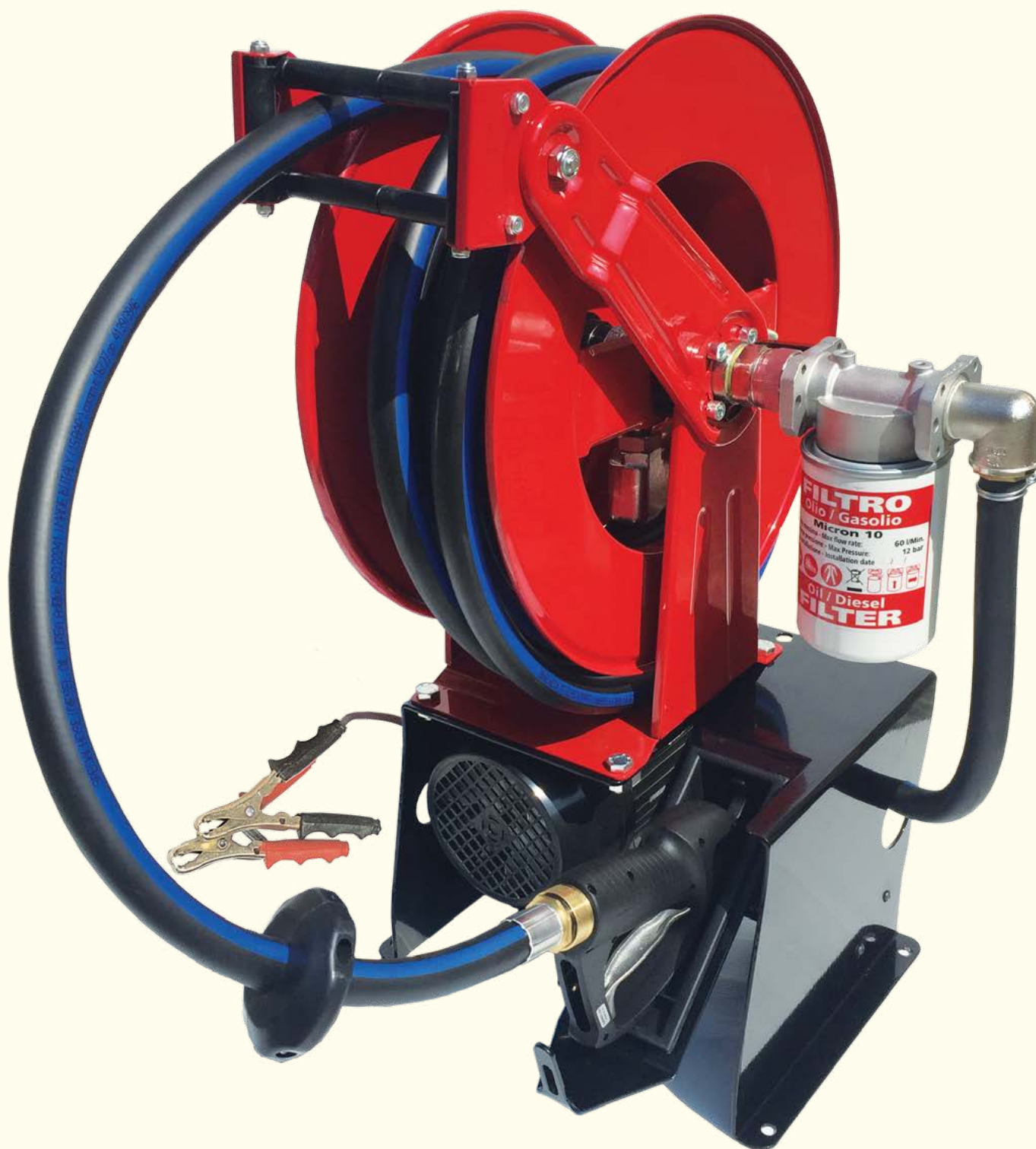
Pos.	Q.ty	Mod.	Description
10/1	1	12V/OIL/GIR	IMPELLER (OIL)
10/2	1	12V/AA/GIR	IMPELLER (AA)
11	1	1224V/R11	O-RING
12	1	1224V/R12	CAP
13	3	1224V/R13	SCREW
14	4	1224V/R14	ANTIVIBRATION
15A	1	12V/R15A	FUSE 12V-10A
15B	1	12V/R15B	FUSE 24V-7,5A

Mod. 220V/OIL/N - 220V/OIL/C - 220V/OEM/N - 220V/OEM/C



Pos.	Q.ty	Mod.	Description
1	1	220V/OIL/R01	MOTOR
2	1	220V/OIL/R02	JOINT
3	1	220V/OIL/R03	SHAFT KEY
4	1	220V/OIL/R04	FLANGE
5	2	220V/OIL/R05	SCREW
6	4	220V/OIL/R06	SCREW
7	2	220V/OIL/R07	BEARING
8	1	220V/OIL/R08	SHAFT

Pos.	Q.ty	Mod.	Description
9	1	220V/OIL/R09	SEGER
10	1	220V/OIL/R10	SEALING RING
11	1	220V/OIL/R11	BODY
12	1	220V/OIL/GIR	IMPELLER
13	1	220V/OIL/R13	O-RING
14	1	220V/OIL/R14	CAP
15	3	220V/OIL/R15	SCREW
16	1	220/OIL/R16	SWITCH

**Mod.OILSTOP12****Mod.OILSTOP24**

- **12V or 24V Oil transfer pump (8 LPM)**
with automatic reel, complete with 4m electric cable and clamps,
by pass system, On/Off Switch, manual nozzle, 10m fuel hose, 2,5m suction hose with foot valve,
10micron filter and spare part cartridge.

Technical data:

Flow rate: 8 L/Min. - Max: 35 Amp (12V) - 18 Amp (24V) - Press. max: 1.5bar
Weight: 25kg - Continuous duty: max 30 min. - Dimensions : 450x600xh720mm

**Mod.OILSTOP220/20****Mod.OILSTOP220/40**

- **220V Oil transfer pump - 20L/Min. - 40L/Min.**
with automatic reel, complete with 4m electric cable and clamps,
by pass system, On/Off Switch, manual nozzle, 10m fuel hose, 2,5m suction hose with foot valve,
10micron - filter and spare part cartridge.

Technical data:

Flow rate: 20-40 L/Min. - Max: 5.5 Amp - 6.2 Amp - Press. max: 5bar
Weight: 30kg - Continuous duty : max 30 min. - Dimensions: 450x600xh720mm

Mod.622/380

Air operated oil dispenser (capacity 24L)

Steel painted tank with wheels, 3m oil hose (R1-1/2" F)
and manual nozzle



Technical data:

Mod.622/380

Threads: 1/4" BSP

Net weight: 14kg - Gross weight: 16kg

Carton box dimensions: 38x35x90cm

Mod.625/380

Threads: 1/4" BSP

Net weight: 23kg - Gross weight: 25kg

Carton box dimensions: 40x42x110cm



Mod. 625/380

Air operated oil dispenser (capacity 50L)

Steel painted tank with wheels, 3m oil hose (R1-1/2" F)
and manual nozzle

Steel painted tank with level indicator. For oil SAE 0>40 and SAE 90.

Security valve: max 8bar. Max level refill $\frac{3}{4}$ of their capacities. Use max 6-8bar inlet air.

Flow rates depend to different situations: temperatures, densities of oils and inlet air pressure.

Mod.622/380/810

Air operated oil dispenser (capacity 24L)

Steel painted tank with wheels, 3m oil hose (R1-1/2"F)
and nozzle with electronic flow meter



Technical data:

Mod.622/380/810

Threads: 1/4"BSP

Net weight: 14kg - Gross weight: 16kg

Carton box dimensions: 38x35x90cm

Mod.625/380/810

Threads: 1/4"BSP

Net weight: 23kg - Gross weight: 25kg

Carton box dimensions: 40x42x110cm

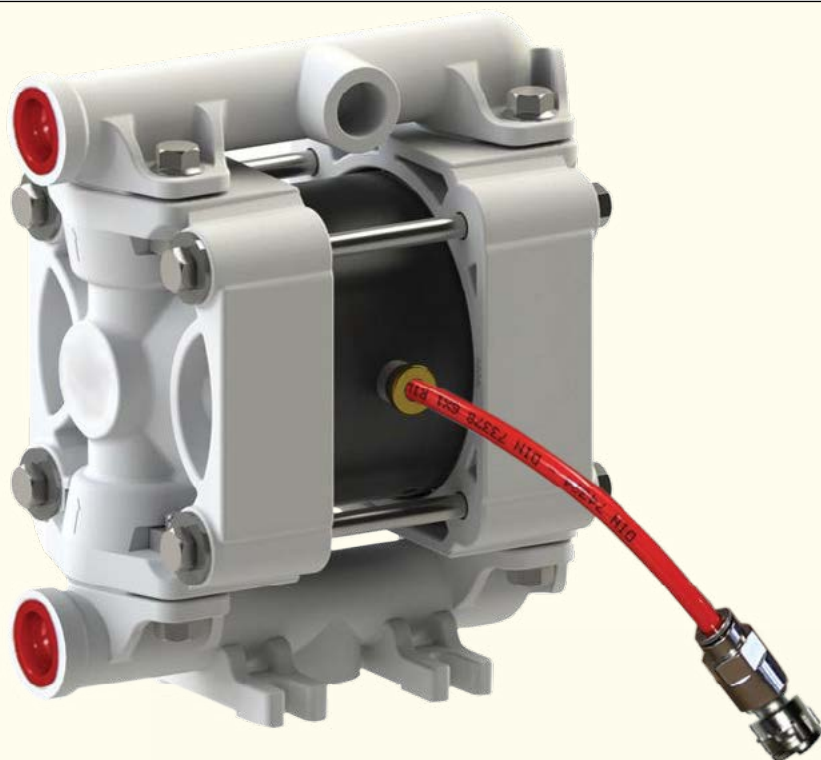


Mod. 625/380/810

Air operated oil dispenser (capacity 50L)

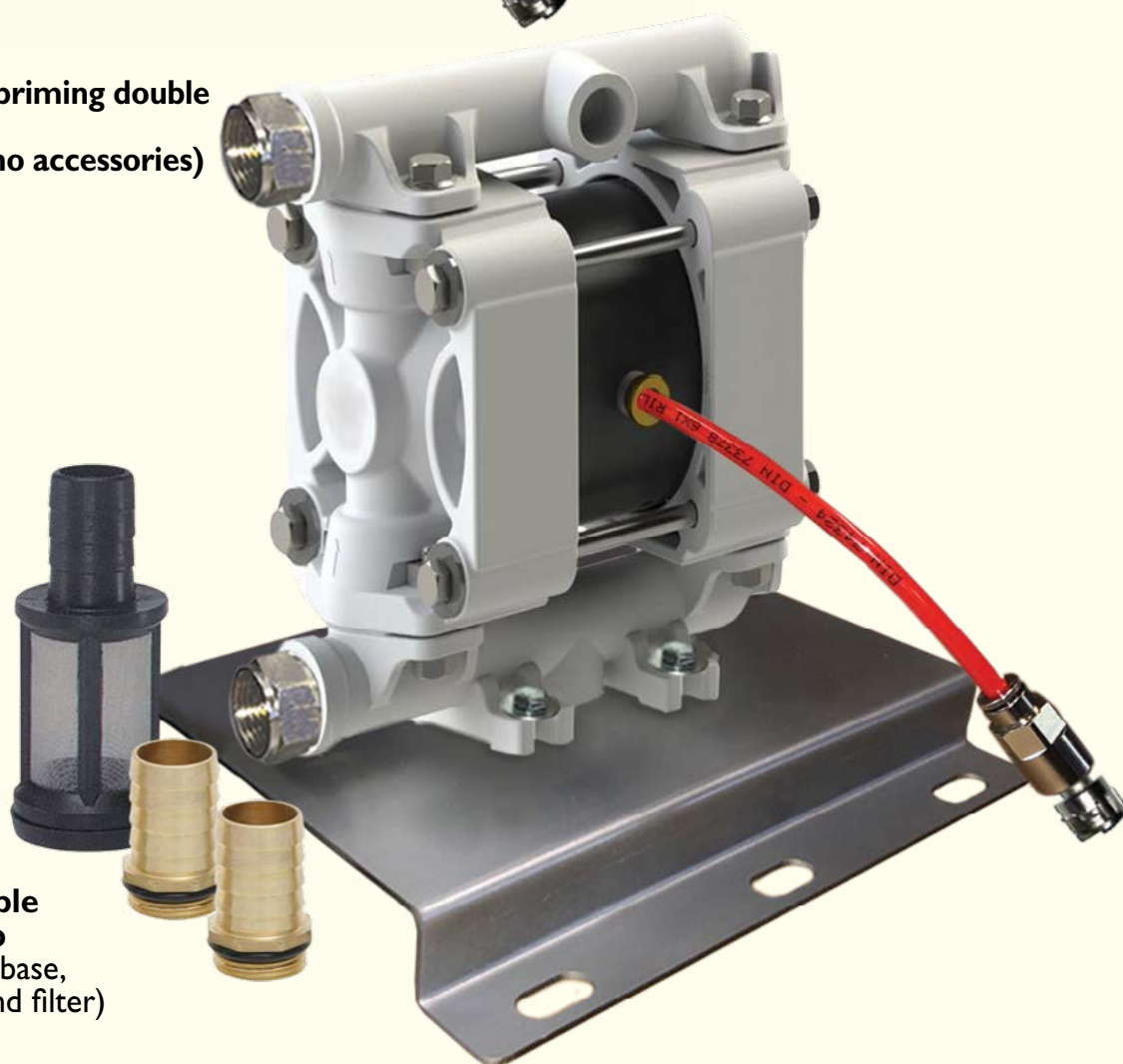
Steel painted tank with wheels, 3m oil hose (R1-1/2"F)
and nozzle with electronic flow meter

Steel painted tank with level indicator. For oil SAE 0>40 and SAE 90.
Security valve: max 8bar. Max level refill ¾ of their capacities. Use max 6-8bar inlet air.
Flow rates depend to different situations: temperatures, densities of oils and inlet air pressure.



Optional:
Mod. **AIR20-55/ST**
Wall fixing base

Mod. **AIR20/N**
Air operated self-priming double diaphragm pump
(only the pump - no accessories)



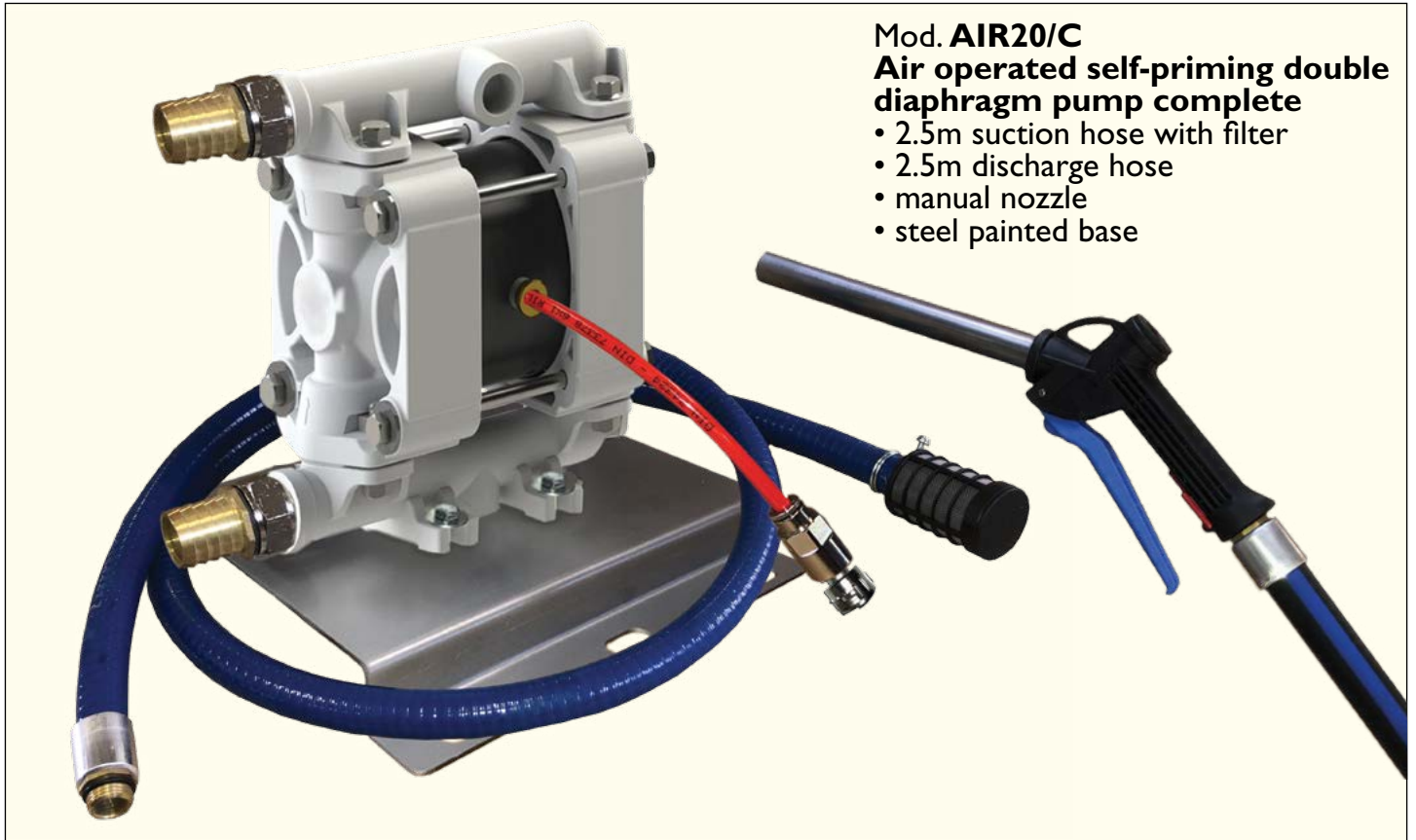
Mod. **AIR20**
Air operated self-priming double diaphragm pump
(with steel painted base, hose connectors and filter)

Flow rate with DIESEL FUEL: 15LPM

Flow rate with Oils or waste oils: approx. 5LPM

Different flow rates based on inlet air pressure, air consumption NI/min. and fluid densities

MAESTRI AIR OPERATED SELF-PRIMING DOUBLE DIAPHRAGM PUMPS for DIESEL FUEL, OILS and WASTE OILS

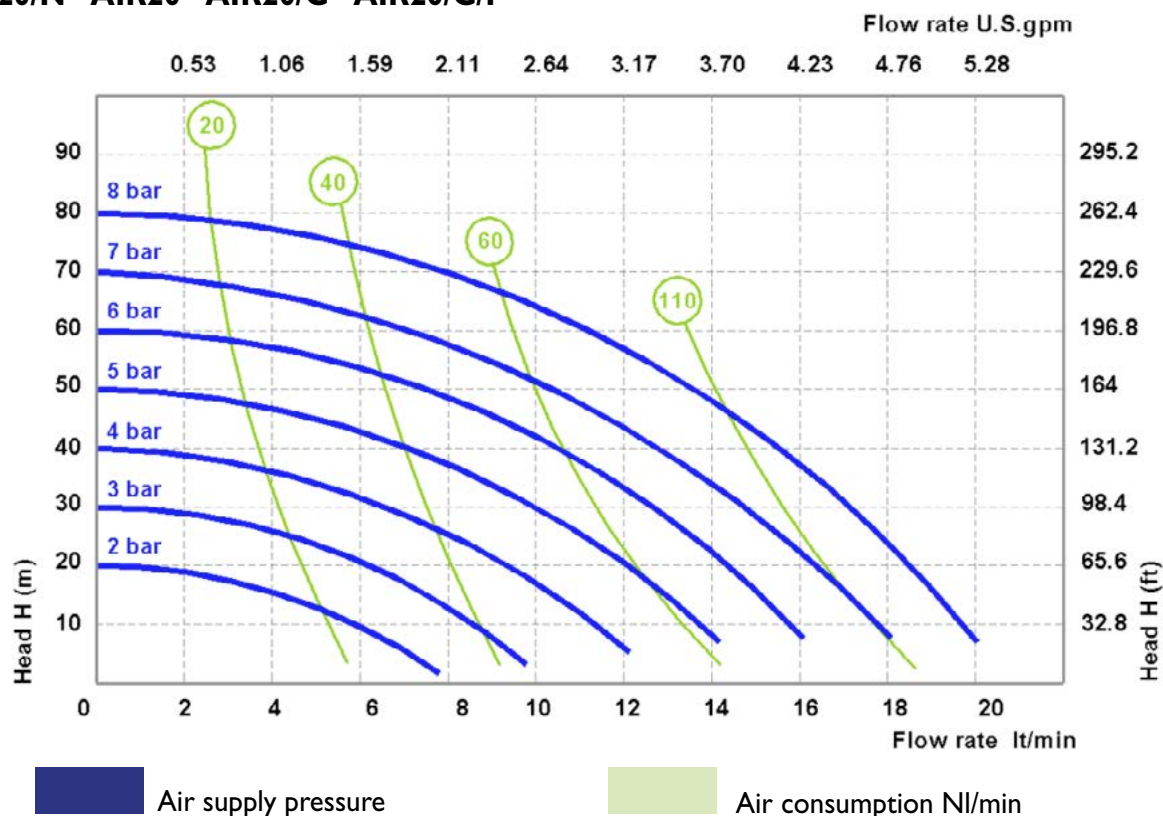


Flow rate with DIESEL FUEL: 15LPM

Flow rate with Oils or waste oils: approx. 5LPM

Different flow rates based on inlet air pressure, air consumption NI/min. and fluid densities

Mod. AIR20/N - AIR20 - AIR20/C - AIR20/C/F

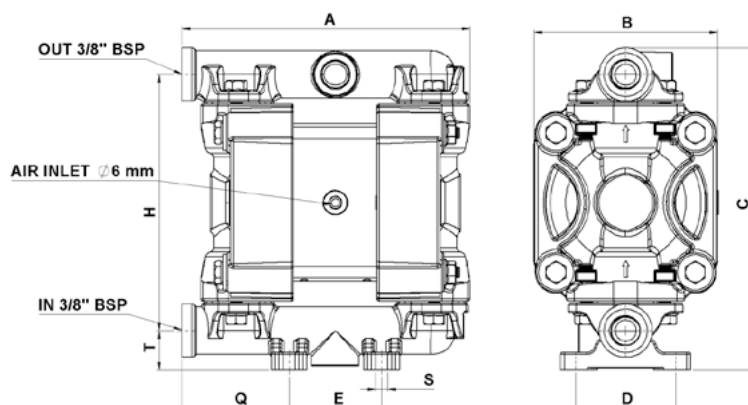


CASING Pom, DIAPHRAGM Hytrel+Ptfe, BALLS Ptfe, SEATS Pom, GASKET Ptfe

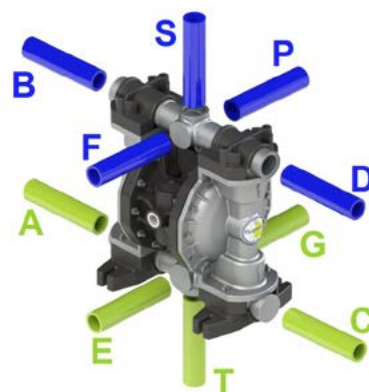
Technical data

FLUID CONNECTIONS: 3/8" BSP
 AIR CONNECTION: 6mm
 MAX FLOW RATE: 20 lt/min
 MAX AIR PRESSURE: 8 bar
 MAX DELIVERY HEAD: 80 m
 MAX SUCTION LIFT DRY: 6 m
 MAX SUCTION LIFT WET: 9,8 m

MAX SOLID PASSING: 3 mm
 NOISE LEVEL: 65dB
 DISPLACEMENT FOR CYCLE: 30 cc
 MAX VISCOSITY: 12.000 cps
 ATEX zone 2: EX II 3/3 GD c IIB T135°C
 WEIGHT: 1.1kg
 MAX TEMPERATURE: 95°C
 MIN TEMPERATURE: -5°C



A 146mm - B 93mm - C 164mm - D 50mm - E 47mm
 H 130mm - Q 55mm - S 6mm - T 20mm



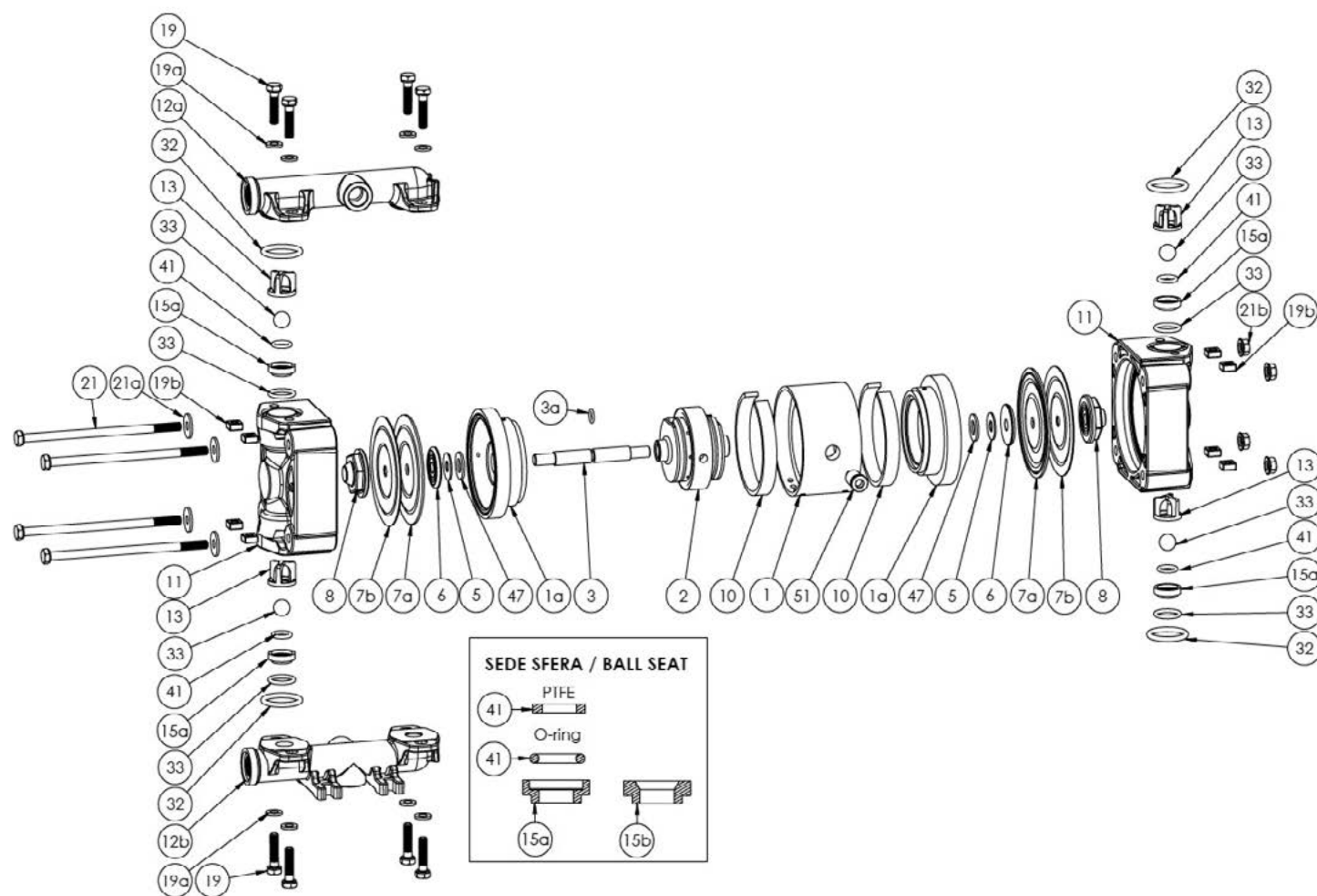
STANDARD: inlet A - outlet B
 OPTIONAL: inlet: E T C G
 outlet: F D P S

The curves and performance values refer to pumps with submerged suction and a free delivery outlet with water at 20°C, and vary according to the construction material. Hose connectors, hoses, nozzles, flow meters and other accessories reduce the nominal flow rate. Technical data are approximate and not binding for the manufacturer who reserves the right to change them without notice at any time.

Pumps must be used in vertical position only.

MAESTRI AIR OPERATED SELF-PRIMING DOUBLE DIAPHRAGM PUMPS for DIESEL FUEL, OILS and WASTE OILS

Mod. AIR20/N - AIR20 - AIR20/C - AIR20/C/F



Pos.	Q.ty	Mod.	Material	Description
1	1	AIR20/R1	PP	Central block
1a	2	AIR20/R1A	PP	Warhead
2	1	AIR20/R2	POM-C	Pneumatic exchanger
3	1	AIR20/R3	AISI	Shaft
3a	1	AIR20/R3A	NBR	O-ring shaft
5	2	AIR20/R5	STEEL	Belleville Washer
6	2	AIR20/R6	ALUMINIUM	Air side cap
7a	2	AIR20/R7A	Hytrek	Air diaphragm
7b	2	AIR20/R7B	PTFE	Fluid diaphragm
8	2	AIR20/R8	PP+VTR	Fluid side cap
10	2	AIR20/R10	FELT	Silencer
11	2	AIR20/R11	POM+VTR	Pump casing
12a	1	AIR20/R12A	POM+VTR	Upper manifold
12b	1	AIR20/R12B	POM+VTR	Lower manifold

Pos.	Q.ty	Mod.	Material	Description
13	4	AIR20/R13	ECTFE	Ball cage wile
14	4	AIR20/R14	PTFE	Ball
15a	4	AIR20/R15A	POM-C	Ball seat
19	8	AIR20/R19	AISI	Screw manifold
19a	4	AIR20/R19A	AISI	Washers manifold
19b	8	AIR20/R19B	AISI	Nuts collector
21	4	AIR20/R21	AISI	Screw pump casing
21a	4	AIR20/R21A	AISI	Washers pump casing
21b	4	AIR20/R21B	AISI	Nuts pump casing
32	4	AIR20/R32	PTFE	Gasket upper
33	4	AIR20/R33	PTFE	Gasket lower
41	4	AIR20/R41	PTFE	Internal gasket seat
47	2	AIR20/R47	PP	Spacer
51	1	AIR20/R51	BRASS	Air connection
	1	AIR20/RKIT		Spare kit AIR20



Optional:
Mod. **AIR20-55/ST**
Wall fixing base

Mod. **AIR55/N**
Air operated self-priming double diaphragm pump
(only the pump - no accessories)



Mod. **AIR55**
Air operated self-priming double diaphragm pump
(with steel painted base,
hose connectors and filter)

Flow rate with **DIESEL FUEL**: 30LPM

Flow rate with **Oils** or **waste oils**: approx. 10LPM

Different flow rates based on inlet air pressure, air consumption NI/min. and fluid densities

AIR OPERATED SELF-PRIMING DOUBLE DIAPHRAGM PUMPS for DIESEL FUEL, OILS and WASTE OILS

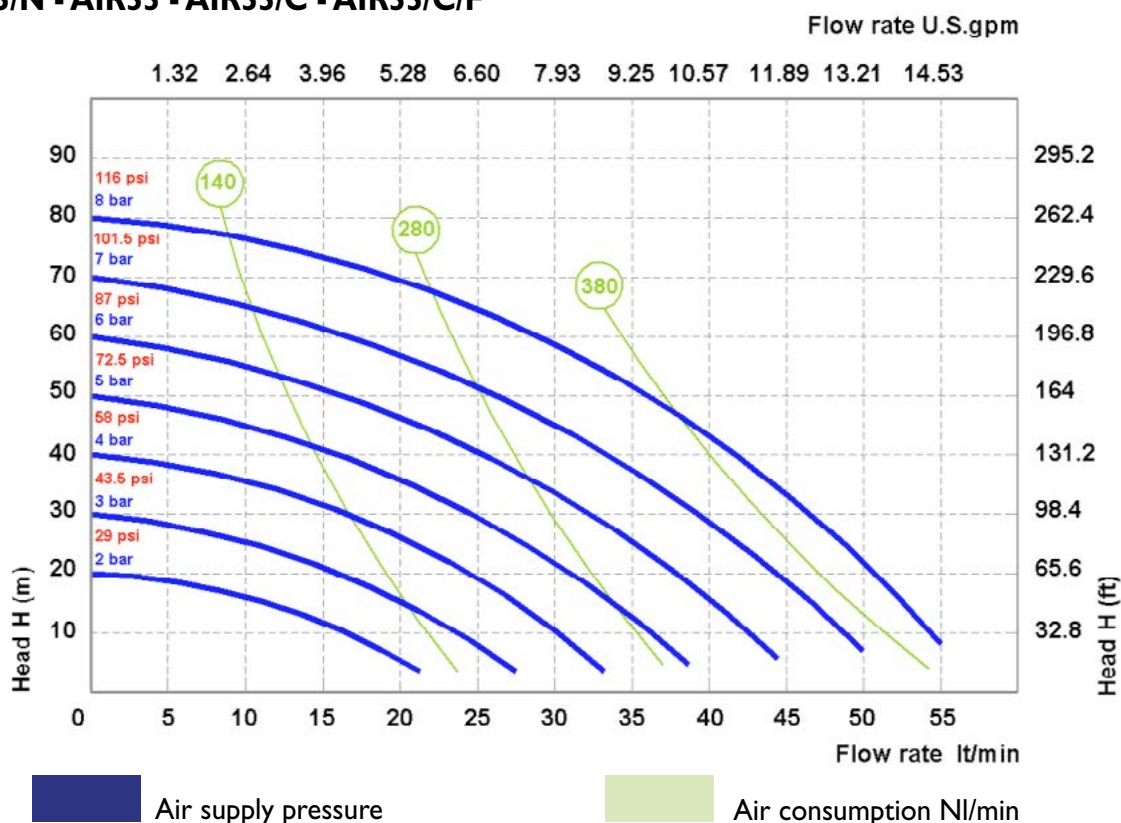


Flow rate with DIESEL FUEL: 30LPM

Flow rate with Oils or waste oils: approx. 10LPM

Different flow rates based on inlet air pressure, air consumption NI/min. and fluid densities

Mod. AIR55/N - AIR55 - AIR55/C - AIR55/C/F

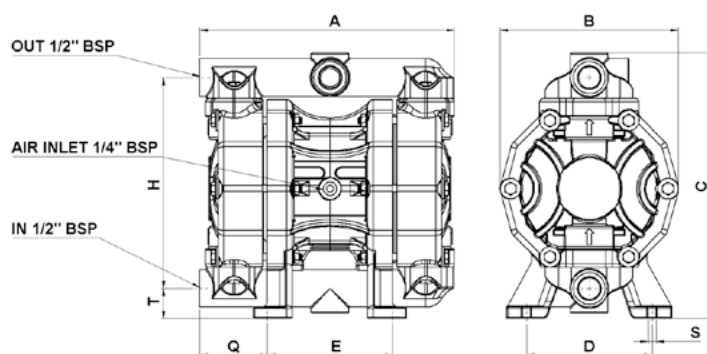


CASING Aluminium, DIAPHRAGM Hytrel+Ptfe, BALLS Ptfe, SEATS Aluminium, GASKET Ptfe

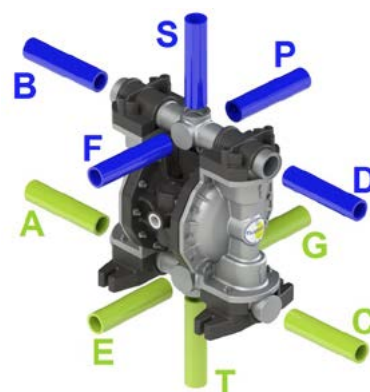
Technical data

FLUID CONNECTIONS: 1/2" BSP
AIR CONNECTION: 1/4" BSP
MAX FLOW RATE: 55 lt/min
MAX AIR PRESSURE: 8 bar
MAX DELIVERY HEAD: 80 m
MAX SUCTION LIFT DRY: 6 m
MAX SUCTION LIFT WET: 9,8 m

MAX SOLID PASSING: 3.5 mm
NOISE LEVEL: 68dB
MAX VISCOSITY: 20.000 cps
ATEX zone 2: EX II 3/3 GD c IIB T135°C
WEIGHT: 5kg
MAX TEMPERATURE: 90°C
MIN TEMPERATURE: -20°C



A 225mm - B 156mm - C 230mm - D 110mm - E 110mm
H 183mm - Q 59mm - S 7mm - T 26mm



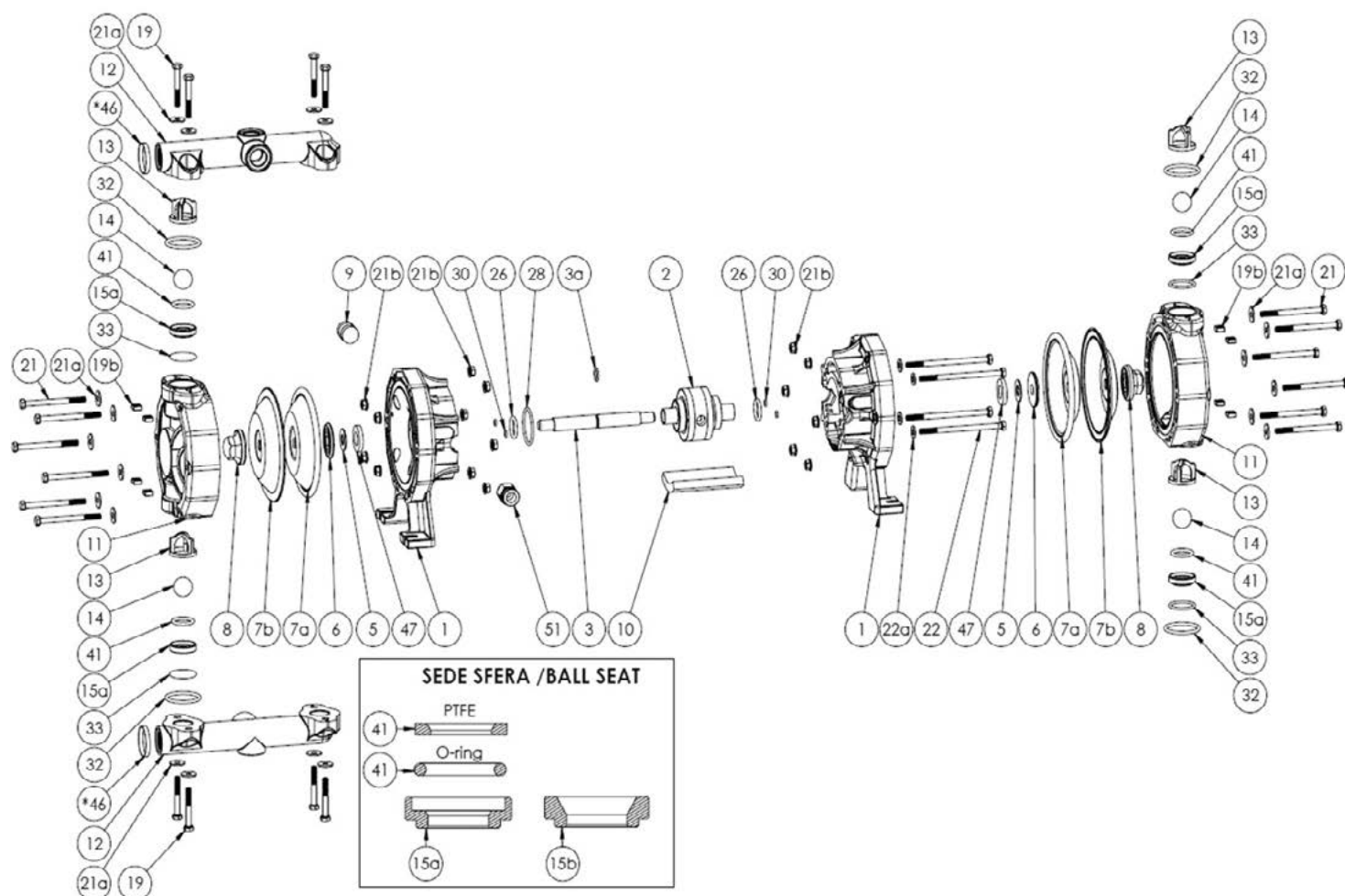
STANDARD: inlet A - outlet B
OPTIONAL: inlet: E T C G
outlet: F D P S

The curves and performance values refer to pumps with submerged suction and a free delivery outlet with water at 20°C, and vary according to the construction material. Hose connectors, hoses, nozzles, flow meters and other accessories reduce the nominal flow rate. Technical data are approximate and not binding for the manufacturer who reserves the right to change them without notice at any time.

Pumps must be used in vertical position only.

MAESTRI AIR OPERATED SELF-PRIMING DOUBLE DIAPHRAGM PUMPS for DIESEL FUEL, OILS and WASTE OILS

Mod. AIR55/N - AIR55 - AIR55/C - AIR55/C/F



Pos.	Q.ty	Mod.	Material	Description
1	2	AIR55/R1	PP+VTR	Central half block
2	1	AIR55/R2	POM-c	Exchanger
3	1	AIR55/R3	AISI	Shaft
3a	1	AIR55/R3A	NBR	O - ring shaft
5	2	AIR55/R5	STEEL	Belleville washer
6	2	AIR55/R6	ALUMINUM	Air side cap
7a	2	AIR55/R7A	Hytre	Air diaphragm
7b	2	AIR55/R7B	PTFE	Fluid diaphragm
8	2	AIR55/R8	ALUMINUM	Fluid side cap
9	1	AIR55/R9	PP	Stopper central half block
10	1	AIR55/R10	FELT	Silencer
11	2	AIR55/R11	ALUMINUM	Pump casing
12	2	AIR55/R12	ALUMINUM	Manifolds
13	4	AIR55/R13	ECTFE	Cage
14	1	AIR55/R14	PTFE	Ball
15b	4	AIR55/R15B	ALUMINUM	Ball seat

Pos.	Q.ty	Mod.	Material	Description
19	8	AIR55/R19	AISI	Screw manifold
19b	8	AIR55/R19B	AISI	Nuts Manifolds
21	12	AIR55/R21	AISI	Screw pump casing
21a	20	AIR55/R21A	AISI	Washers
21b	16	AIR55/R21B	AISI	Nuts
22	4	AIR55/R22	AISI	Screw central half block
22a	12	AIR55/R22A	AISI	Washers central half block
26	2	AIR55/R26	NBR	O-ring
28	2	AIR55/R28	NBR	O-ring
30	4	AIR55/R30	NBR	O-ring
32	4	AIR55/R32	PTFE	Gasket upper
33	4	AIR55/R33	PTFE	Gasket lower
41	4	AIR55/R41	PTFE	Internal gasket seat
* 46	2	AIR55/R46	AISI	Reinforcing ring manifold
47	2	AIR55/R47	Pom-c	Stroke spacer
51	1	AIR55/R51	ALUMINUM	Air connection with O-ring
	1	AIR55/RKIT		Spare kit AIR55

MAESTRI AIR OPERATED SELF-PRIMING DOUBLE DIAPHRAGM PUMPS for DIESEL FUEL, OILS and WASTE OILS



Optional:
Mod. **AIR110-170/ST**
Wall fixing base

Mod. **AIR110/N**
Air operated self-priming double diaphragm pump
(only the pump - no accessories)



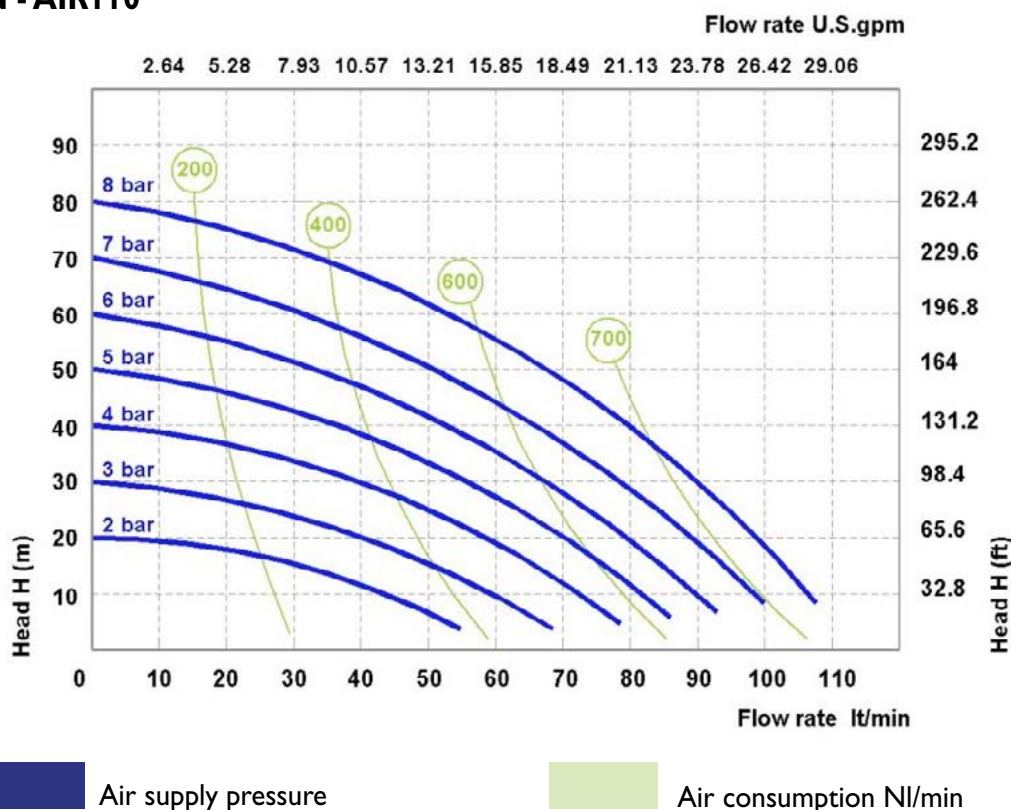
Mod. **AIR110**
Air operated self-priming double diaphragm pump
(with steel painted base,
hose connectors and filter)

Flow rate with DIESEL FUEL: 40LPM

Flow rate with Oils or waste oils: approx. 15LPM

Different flow rates based on inlet air pressure, air consumption NI/min. and fluid densities

Mod. AIR110/N - AIR110

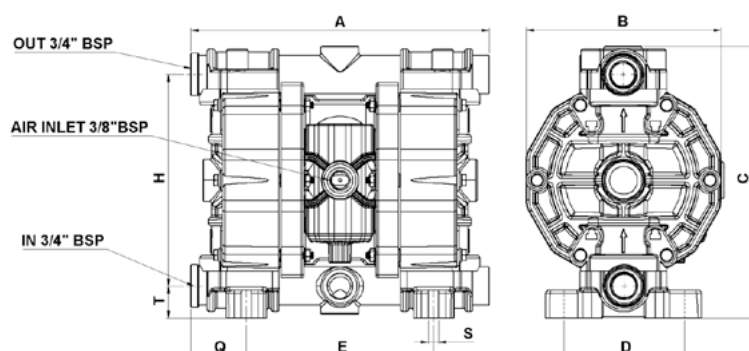


CASING Aluminium, DIAPHRAGM Hytrel+Ptfе, BALLS Ptfе, SEATS Aluminium, GASKET Ptfе

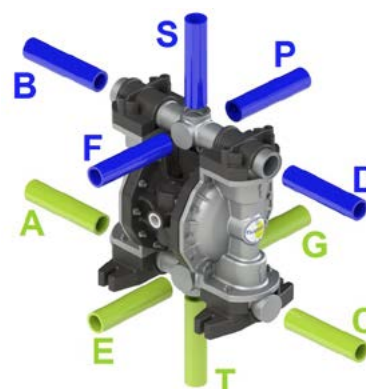
Technical data

FLUID CONNECTIONS: 3/4" BSP
 AIR CONNECTION: 3/8" BSP
 MAX FLOW RATE: 110 lt/min
 MAX AIR PRESSURE: 8 bar
 MAX DELIVERY HEAD: 80 m
 MAX SUCTION LIFT DRY: 6 m
 MAX SUCTION LIFT WET: 9,8 m

MAX SOLID PASSING: 3.5 mm
 NOISE LEVEL: 72dB
 MAX VISCOSITY: 25.000 cps
 ATEX zone 2: EX II 3/3 GD c IIB T135°C
 WEIGHT: 7kg
 MAX TEMPERATURE: 90°C MIN
 TEMPERATURE: -20°C



A 265mm - B 175mm - C 245mm - D 108mm
 E 168mm - H 189mm - Q 50mm - S 9mm - T 29mm



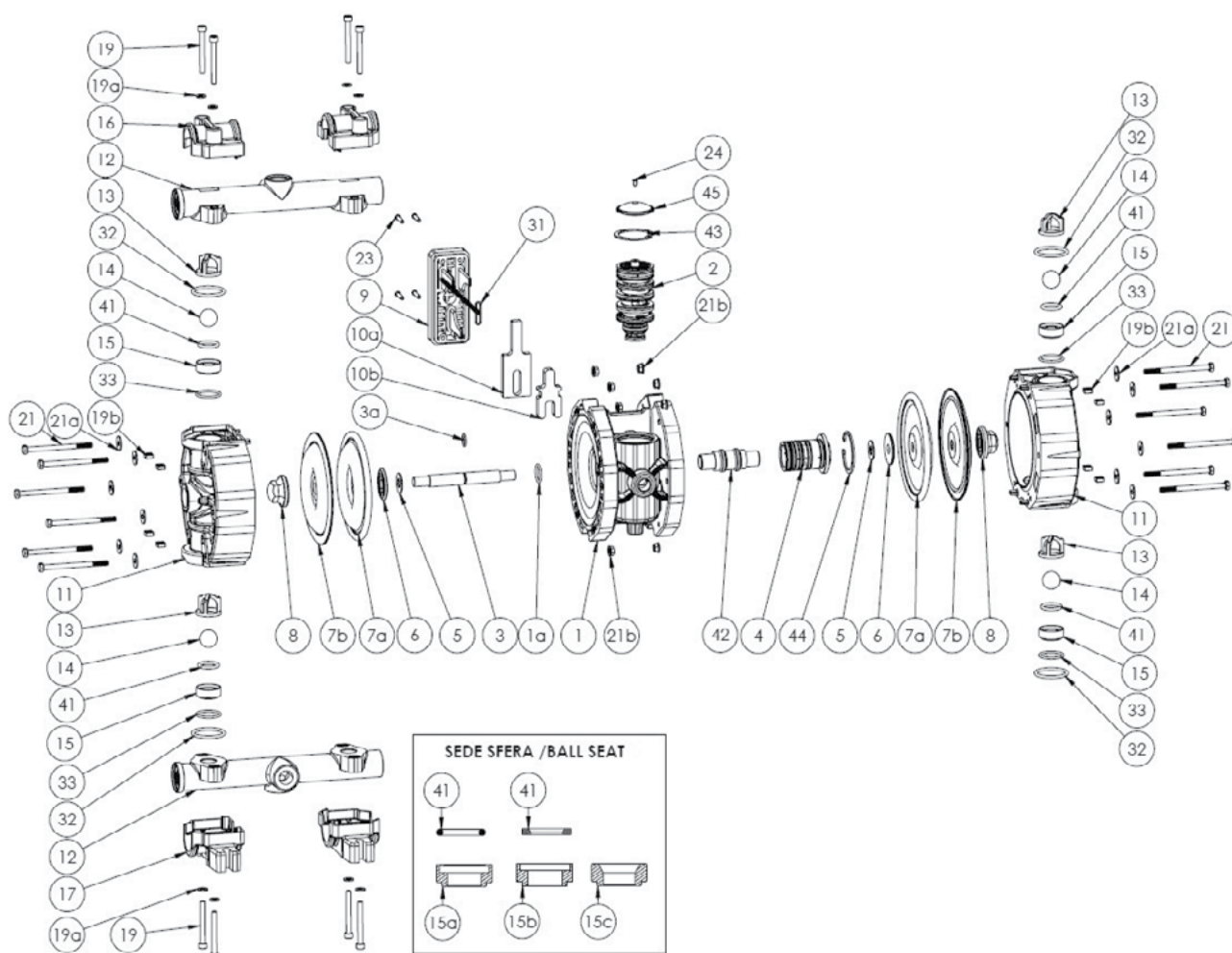
STANDARD: inlet A - outlet B
 OPTIONAL: inlet: E T C G
 outlet: F D P S

The curves and performance values refer to pumps with submerged suction and a free delivery outlet with water at 20°C, and vary according to the construction material. Hose connectors, hoses, nozzles, flow meters and other accessories reduce the nominal flow rate. Technical data are approximate and not binding for the manufacturer who reserves the right to change them without notice at any time.

Pumps must be used in vertical position only.

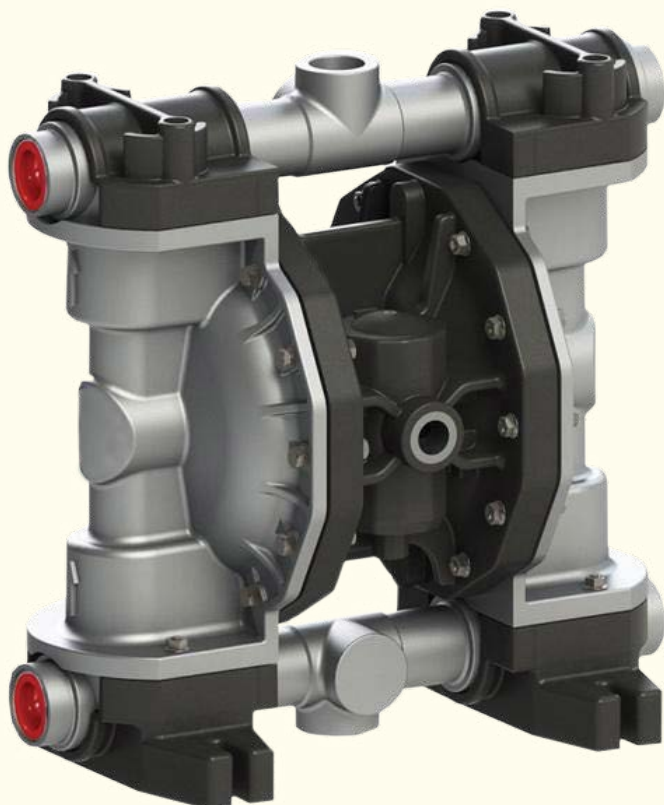
MAESTRI AIR OPERATED SELF-PRIMING DOUBLE DIAPHRAGM PUMPS for DIESEL FUEL, OILS and WASTE OILS

Mod. AIR110/N - AIR110



Pos.	Q.ty	Mod.	Material	Description
1	1	AIR110/R1	PP	Central block
1a	1	AIR110/R1A	NBR	O - ring
2	1	AIR110/R2	POM-c	Exchanger
3	1	AIR110/R3	AISI	Shaft
3a	1	AIR110/R3A	NBR	O - ring
4	1	AIR110/R4	POM-c	Diaphragm with O-ring
5	2	AIR110/R5	STEEL	Belleville washer
6	2	AIR110/R6	ALUMINUM	Cap
7a	2	AIR110/R7A	Hytrel	Air diaphragm
7b	2	AIR110/R7B	PTFE	Fluid diaphragm
8	2	AIR110/R8	ALUMINUM	Fluid side cap
9	1	AIR110/R9	PP+VTR	Silencer grid
10a	1	AIR110/R10A	FELT	External silencer
10b	1	AIR110/R10B	FELT	Internal silencer
11	2	AIR110/R11	ALUMINUM	Pump casing
12	2	AIR110/R12	ALUMINUM	Manifolds
13	4	AIR110/R13	ECTFE	Cage
14	4	AIR110/R14	PTFE	Ball

Pos.	Q.ty	Mod.	Material	Description
15c	4	AIR110/R15C	ALUMINUM	Ball seat
16	2	AIR110/R16	PP +VTR	Collar
17	2	AIR110/R17	PP +VTR	Foot
19	8	AIR110/R19	AISI	Screw manifold
19b	8	AIR110/R19B	AISI	Nuts Manifolds
21	12	AIR110/R21	AISI	Screw pump casing
21a	20	AIR110/R21A	AISI	Washers
21b	12	AIR110/R21B	AISI	Nuts
23	4	AIR110/R23	AISI	Screw silencer grid
24	1	AIR110/R24	AISI	Screw cover exchanger
31	1	AIR110/R31	NBR	O-ring silencer
32	4	AIR110/R32	PTFE	Gasket upper
33	4	AIR110/R33	PTFE	Gasket lower
41	4	AIR110/R41	PTFE	Internal gasket seat
42	1	AIR110/R42	POM-c	Bushing with O-ring
43	1	AIR110/R43	STEEL	Seeger Exchanger
44	1	AIR110/R44	STEEL	Seeger Central block
45	1	AIR110/R45	PP+VTR	Cover exchanger
	1	AIR110/RKIT		Spare kit AIR110



Optional:
Mod. **AIR110-170/ST**
Wall fixing base

Mod. **AIR170/N**
Air operated self-priming double diaphragm pump
(only the pump - no accessories)



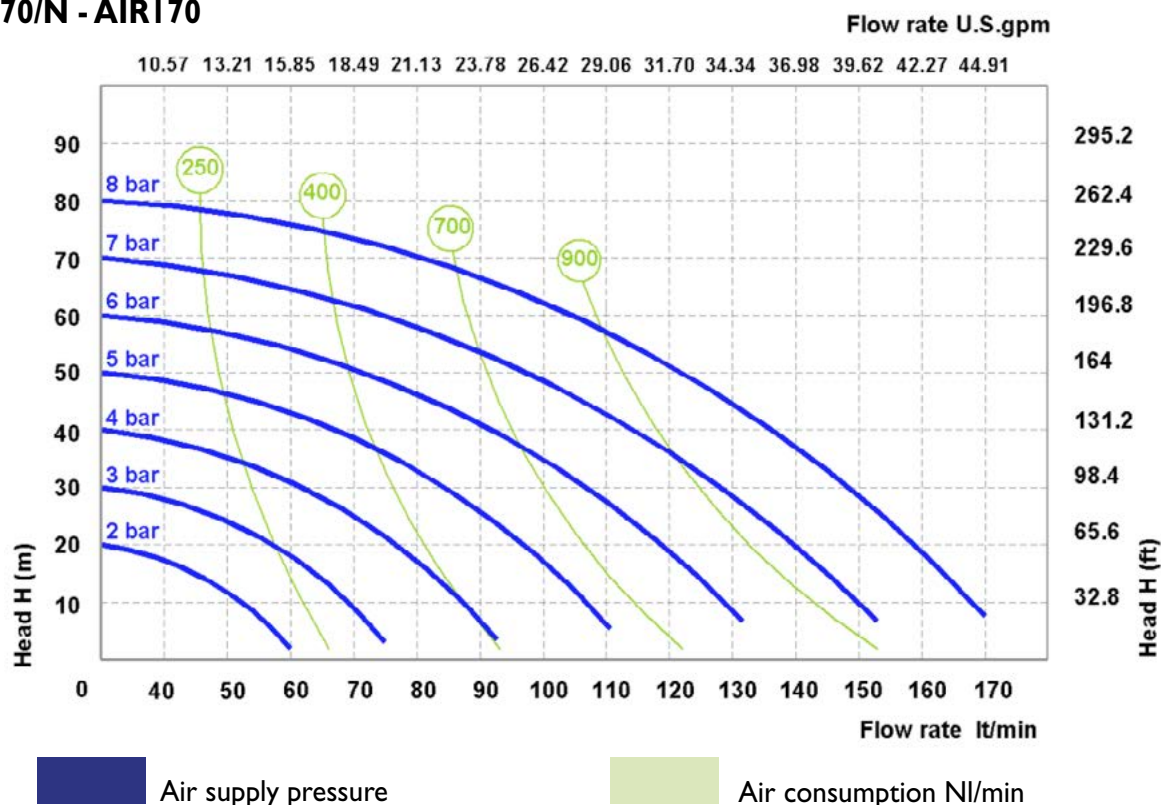
Mod. **AIR170**
Air operated self-priming double diaphragm pump
(with steel painted base,
hose connectors and filter)

Flow rate with DIESEL FUEL: 50LPM

Flow rate with Oils or waste oils: approx. 20LPM

Different flow rates based on inlet air pressure, air consumption NI/min. and fluid densities

Mod. AIR170/N - AIR170

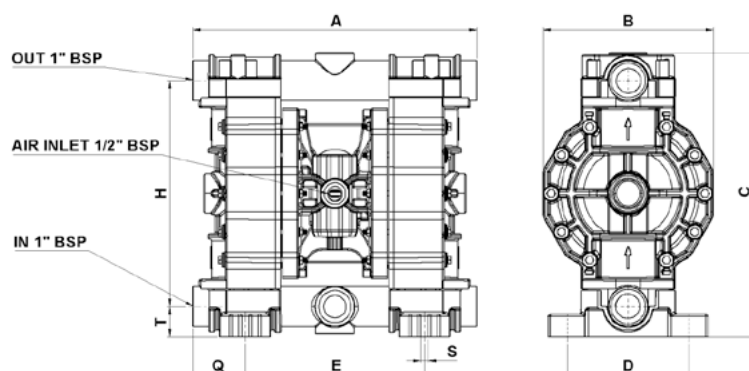


CASING Aluminium, DIAPHRAGM Hytrel+Ptfe, BALLS Ptfe, SEATS Aluminium, GASKET Ptfe

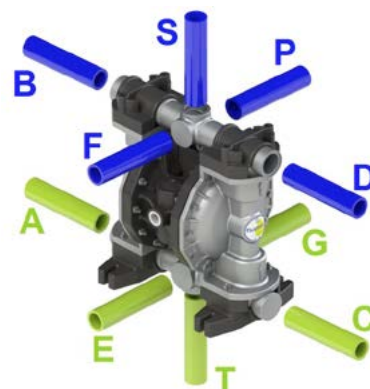
Technical data

FLUID CONNECTIONS: 1" BSP
 AIR CONNECTION: 1/2" BSP
 MAX FLOW RATE: 170 lt/min
 MAX AIR PRESSURE: 8 bar
 MAX DELIVERY HEAD: 80 m
 MAX SUCTION LIFT DRY: 6 m
 MAX SUCTION LIFT WET: 9,8 m

MAX SOLID PASSING: 7.5 mm
 NOISE LEVEL: 75dB
 MAX VISCOSITY: 35.000 cps
 ATEX zone 2: EX II 3/3 GD c IIB T1 35°C
 WEIGHT: 16kg
 MAX TEMPERATURE: 90°C
 MIN TEMPERATURE: -20°C



A 370mm - B 222mm - C 364mm - D 157mm -
 E 233mm - H 286mm - Q 69mm - S 9mm - T 39mm



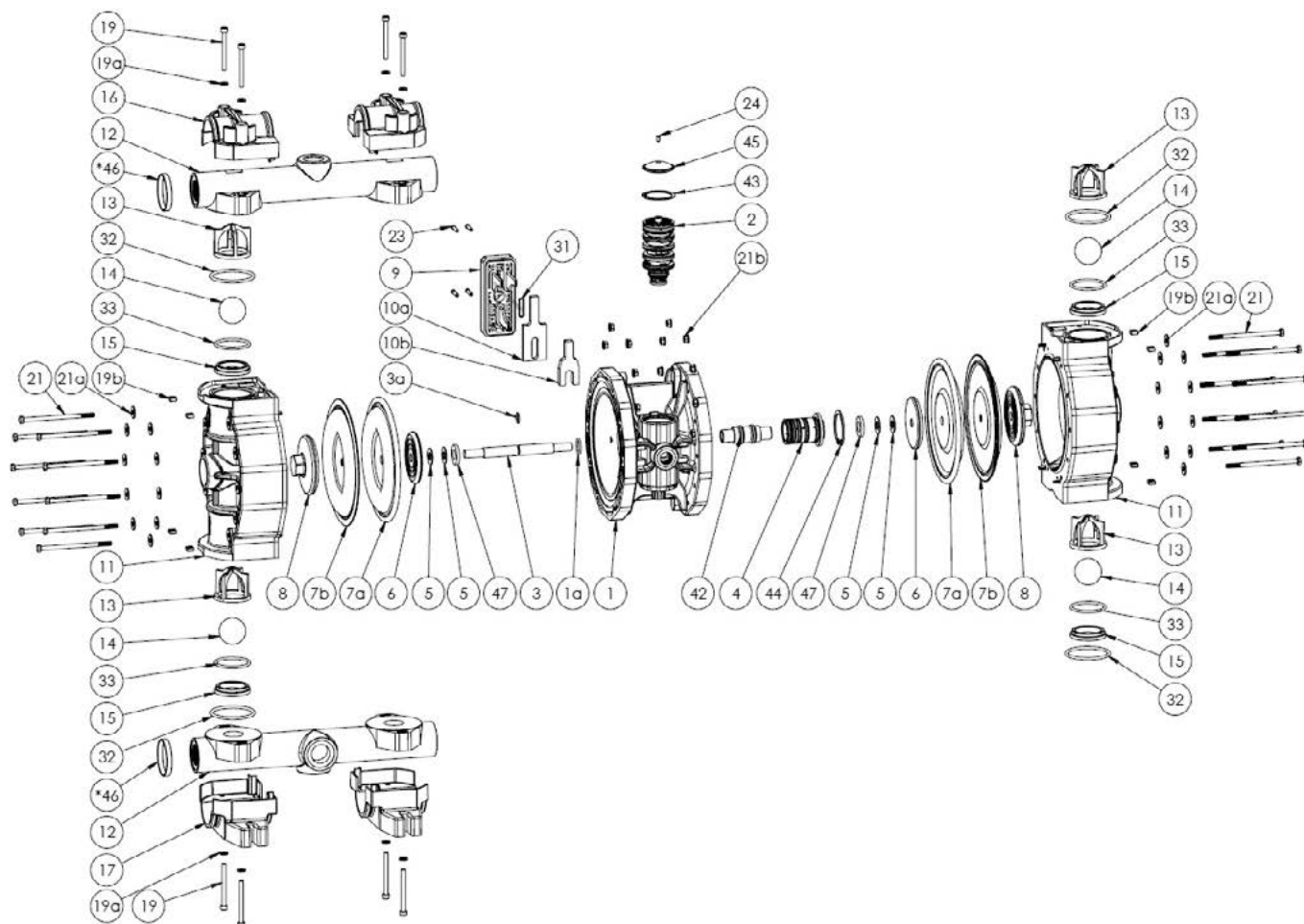
STANDARD: inlet A - outlet B
 OPTIONAL: inlet: E T C G
 outlet: F D P S

The curves and performance values refer to pumps with submerged suction and a free delivery outlet with water at 20°C, and vary according to the construction material. Hose connectors, hoses, nozzles, flow meters and other accessories reduce the nominal flow rate. Technical data are approximate and not binding for the manufacturer who reserves the right to change them without notice at any time.

Pumps must be used in vertical position only.

MAESTRI AIR OPERATED SELF-PRIMING DOUBLE DIAPHRAGM PUMPS for DIESEL FUEL, OILS and WASTE OILS

Mod. AIR170/N - AIR170



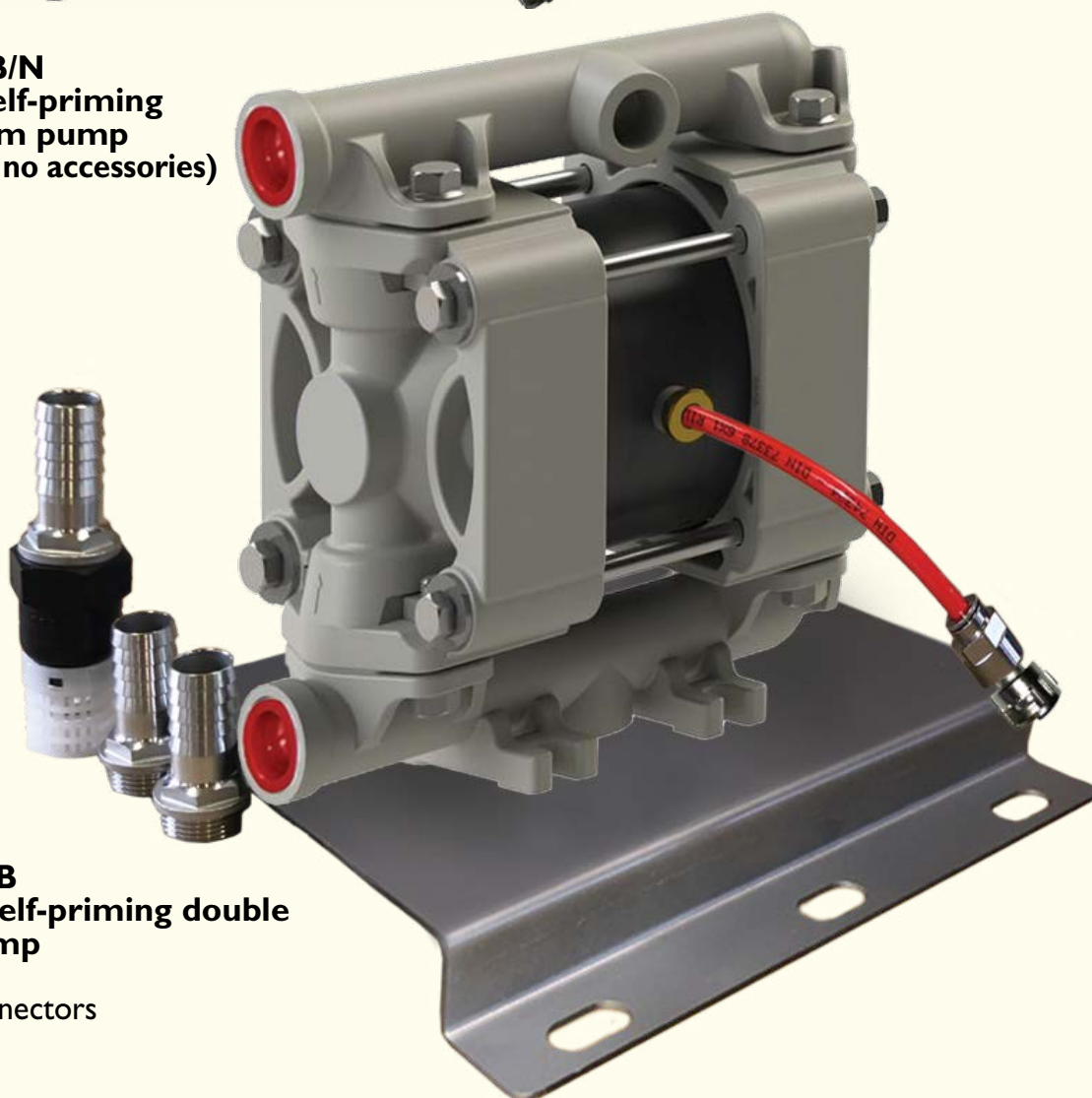
Pos.	Q.ty	Mod.	Material	Description
1	1	AIR170/R1	PP	New version central block
1a	1	AIR170/R1A	NBR	O-ring
2	1	AIR170/R2	POM-c	Exchanger
3	1	AIR170/R3	AISI	Shaft
3a	1	AIR170/R3A	NBR	O - ring shaft
4	1	AIR170/R4	POM-c	Intermediate plate with O-ring
5	4	AIR170/R5	STEEL	Belleville washer
6	2	AIR170/R6	ALUMINUM	Air side cap
7a	2	AIR170/R7A	Hytre	Air diaphragm
7b	2	AIR170/R7B	PTFE	Fluid diaphragm
8	2	AIR170/R8	ALUMINUM	Fluid side cap
9	1	AIR170/R9	PP+VTR	Silencer grid with O-ring
10a	1	AIR170/R10A	FELT	External silencer
10b	1	AIR170/R10B	FELT	Internal silencer
11	2	AIR170/R11	ALUMINUM	Pump casing
12	2	AIR170/R12	ALUMINUM	Upper/lower manifold
13	4	AIR170/R13	ECTFE	Cage
14	4	AIR170/R14	PTFE	Ball
15	4	AIR170/R15	ALUMINUM	Ball seat
16	2	AIR170/R16	PP +VTR	Collar

Pos.	Q.ty	Mod.	Material	Description
17	2	AIR170/R17	PP +VTR	Foot
19	8	AIR170/R19	AISI	Screw manifold
19a	8	AIR170/R19A	AISI	Washers
19b	8	AIR170/R19B	AISI	Nuts Manifolds
21	20	AIR170/R21	AISI	Screw pump casing
21a	20	AIR170/R21A	AISI	Washers
21b	20	AIR170/R21B	AISI	Nuts body Central block
23	4	AIR170/R23	AISI	Screw silencer grid
24	1	AIR170/R24	AISI	Screw cover exchanger
31	1	AIR170/R31	NBR	O-ring silencer
32	4	AIR170/R32	PTFE	Upper O-ring
33	4	AIR170/R33	PTFE	Gasket lower
42	1	AIR170/R42	POM-c	Bushing with O-ring
43	1	AIR170/R43	STEEL	Seeger Exchanger
44	1	AIR170/R44	STEEL	Seeger Exchanger
45	1	AIR170/R45	PP+VTR	Cover exchanger
*46	2	AIR170/R46	AISI	Reinforcing ring
47	2	AIR170/R47	PP	Stroke spacer
	1	AIR170/RKIT		Spare kit AIR170



Optional:
Mod. **AIR20-55/ADB/ST**
INOX wall fixing base

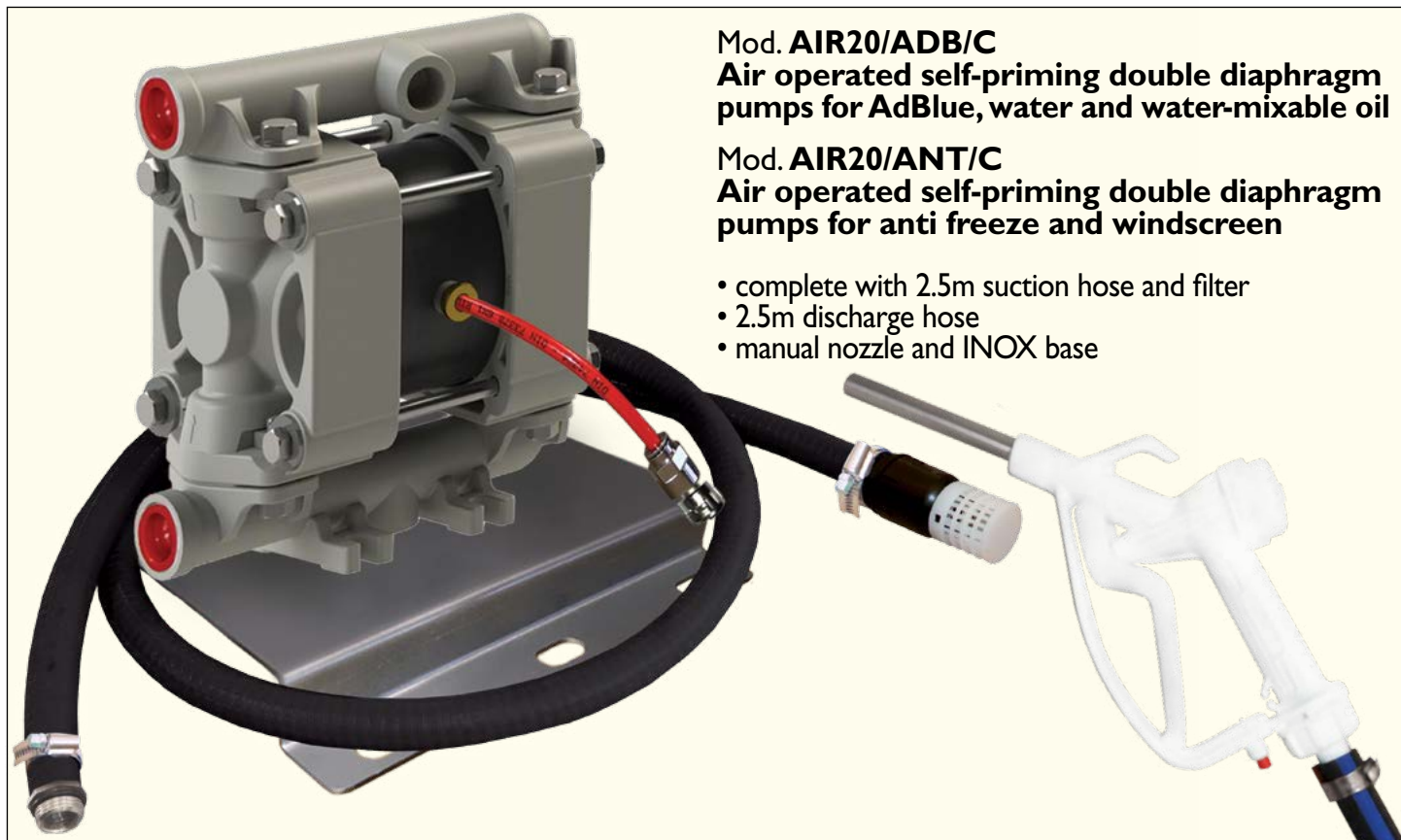
Mod. **AIR20/ADB/N**
Air operated self-priming double diaphragm pump
(only the pump - no accessories)



Mod. **AIR20/ADB**
Air operated self-priming double diaphragm pump
• INOX base
• INOX hose connectors
• Foot valve

Flow rate with WATER: 20LPM

Different flow rates based on inlet air pressure, air consumption NI/min. and fluid densities

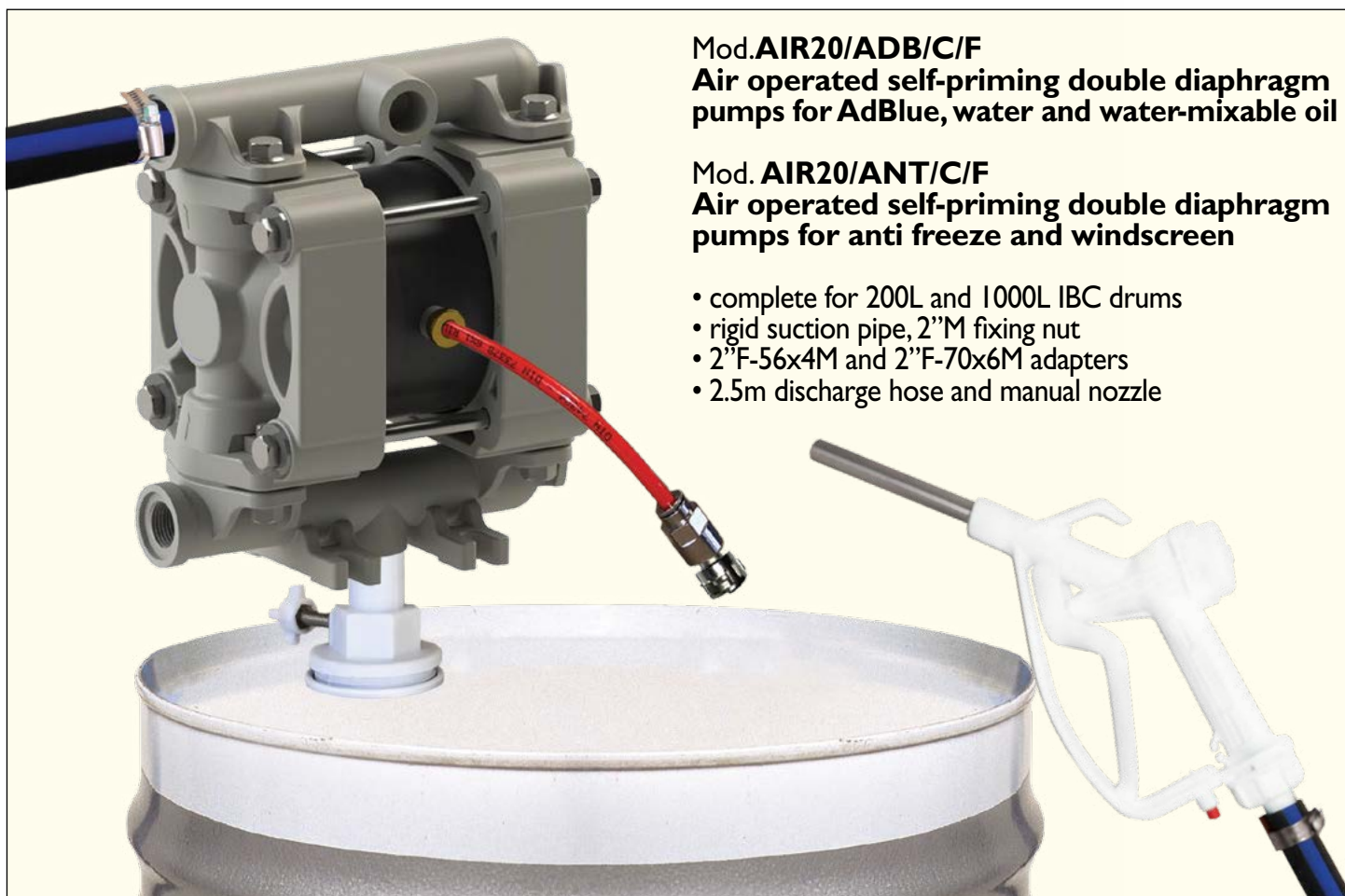
**Mod. AIR20/ADB/C**

Air operated self-priming double diaphragm pumps for AdBlue, water and water-mixable oil

Mod. AIR20/ANT/C

Air operated self-priming double diaphragm pumps for anti freeze and windscreen

- complete with 2.5m suction hose and filter
- 2.5m discharge hose
- manual nozzle and INOX base

**Mod. AIR20/ADB/C/F**

Air operated self-priming double diaphragm pumps for AdBlue, water and water-mixable oil

Mod. AIR20/ANT/C/F

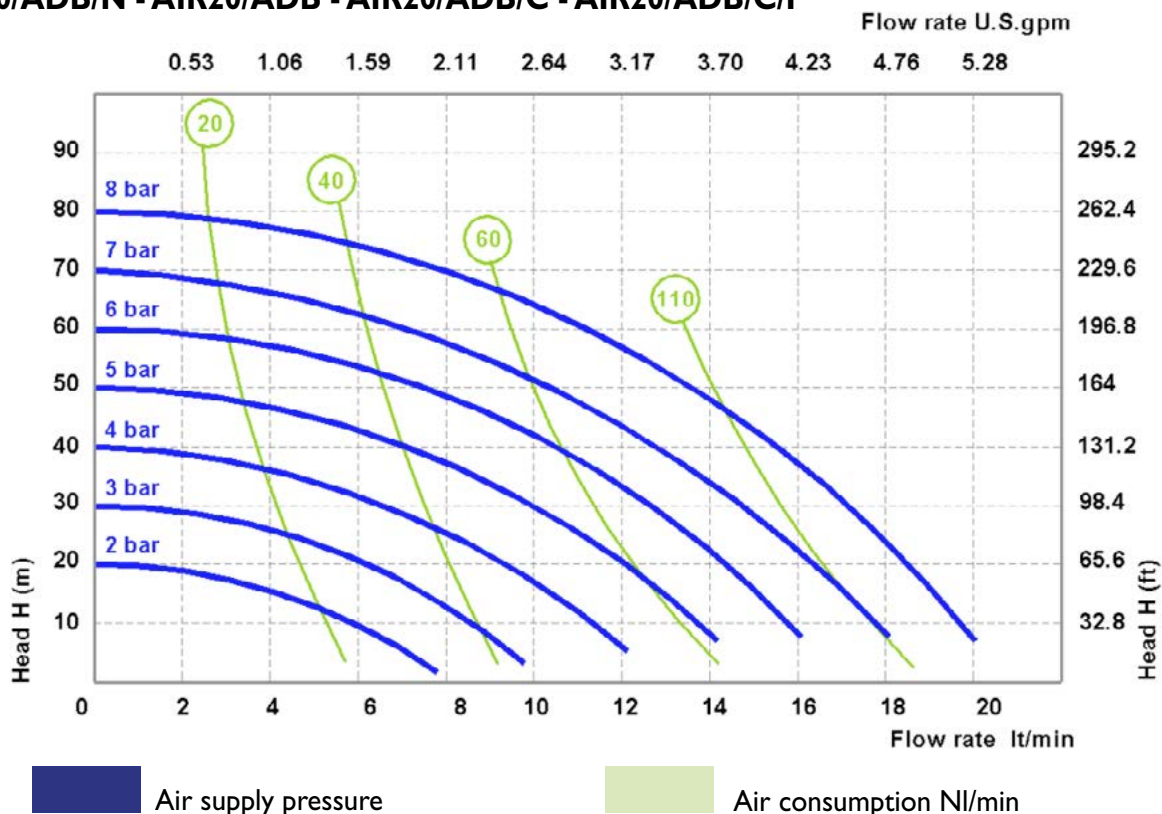
Air operated self-priming double diaphragm pumps for anti freeze and windscreen

- complete for 200L and 1000L IBC drums
- rigid suction pipe, 2" M fixing nut
- 2" F-56x4M and 2" F-70x6M adapters
- 2.5m discharge hose and manual nozzle

Flow rate with WATER: 15LPM

Different flow rates based on inlet air pressure, air consumption NI/min. and fluid densities

Mod. AIR20/ADB/N - AIR20/ADB - AIR20/ADB/C - AIR20/ADB/C/F

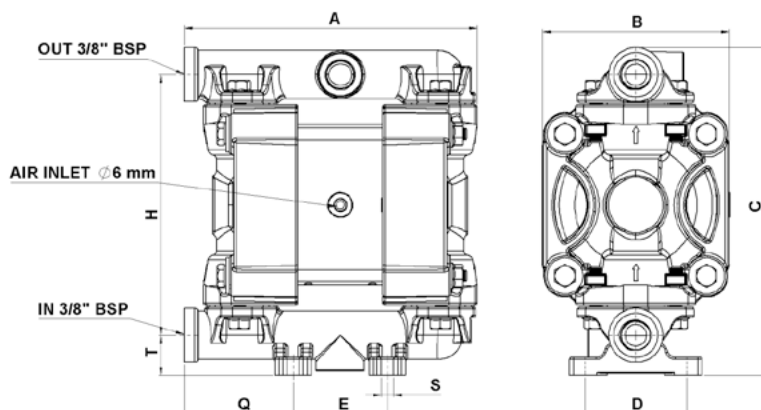


CASING polypropylene, **DIAPHRAGM** Hytrel+Ptfe, **BALLS** Ptfe, **SEATS** polypropylene, **GASKET** Ptfe

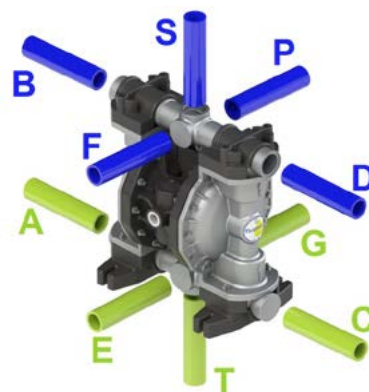
Technical data

FLUID CONNECTIONS: 3/8" BSP
AIR CONNECTION: 6mm
MAX FLOW RATE: 20 lt/min
MAX AIR PRESSURE: 8 bar
MAX DELIVERY HEAD: 80 m
MAX SUCTION LIFT DRY: 6 m
MAX SUCTION LIFT WET: 9,8 m

MAX SOLID PASSING: 3 mm
NOISE LEVEL: 65dB
DISPLACEMENT FOR CYCLE: 30 cc
MAX VISCOSITY: 12.000 cps
ATEX zone 2: EX II 3/3 GD c IIB T1 35°C
WEIGHT: 1.1kg
MAX TEMPERATURE: 65°C
MIN TEMPERATURE: -4°C



A 146mm - B 93mm - C 164mm - D 50mm - E 47mm
H 130mm - Q 55mm - S 6mm - T 20mm

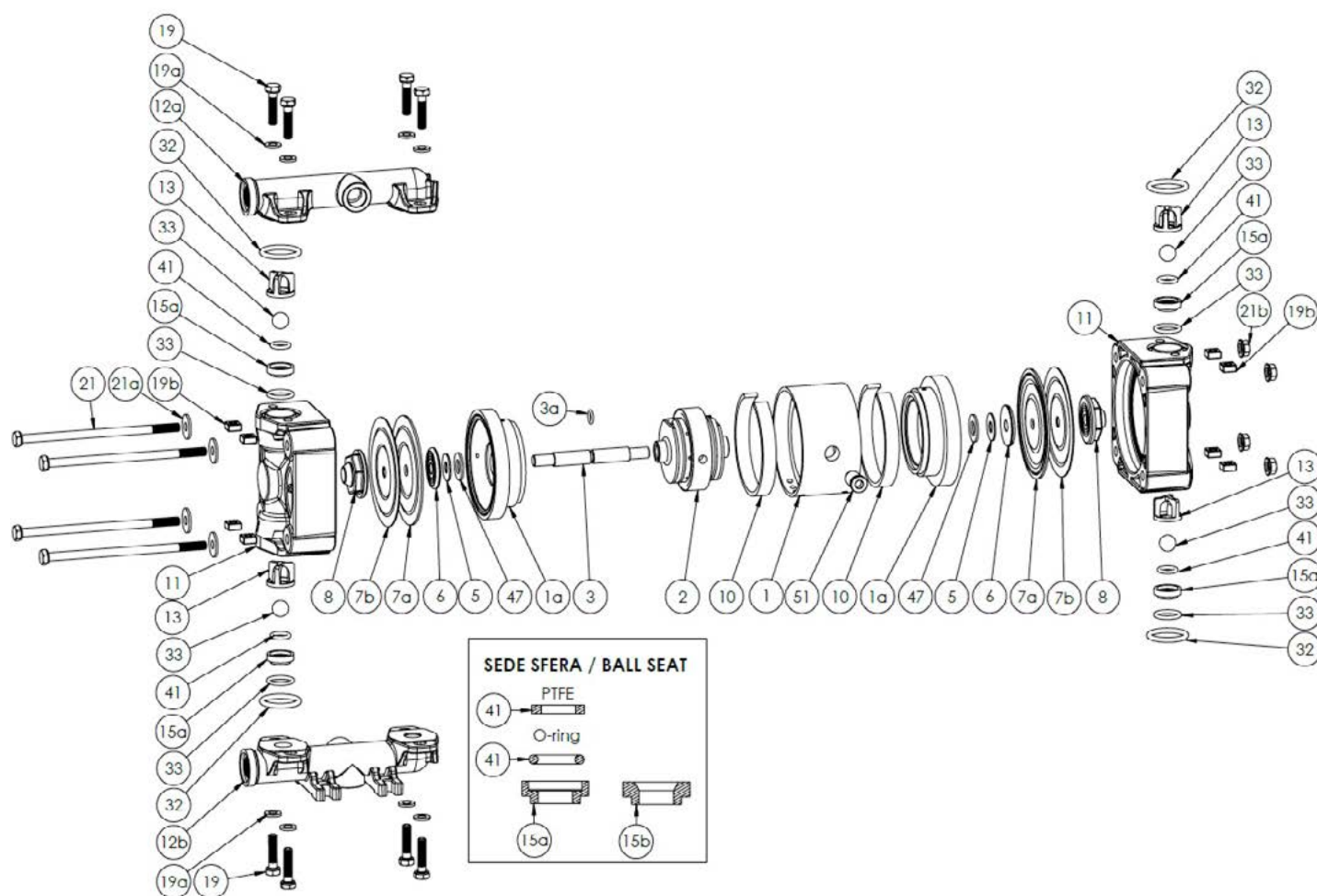


STANDARD: inlet A - outlet B
OPTIONAL: inlet: E T C G
outlet: F D P S

The curves and performance values refer to pumps with submerged suction and a free delivery outlet with water at 20°C, and vary according to the construction material. Hose connectors, hoses, nozzles, flow meters and other accessories reduce the nominal flow rate. Technical data are approximate and not binding for the manufacturer who reserves the right to change them without notice at any time.

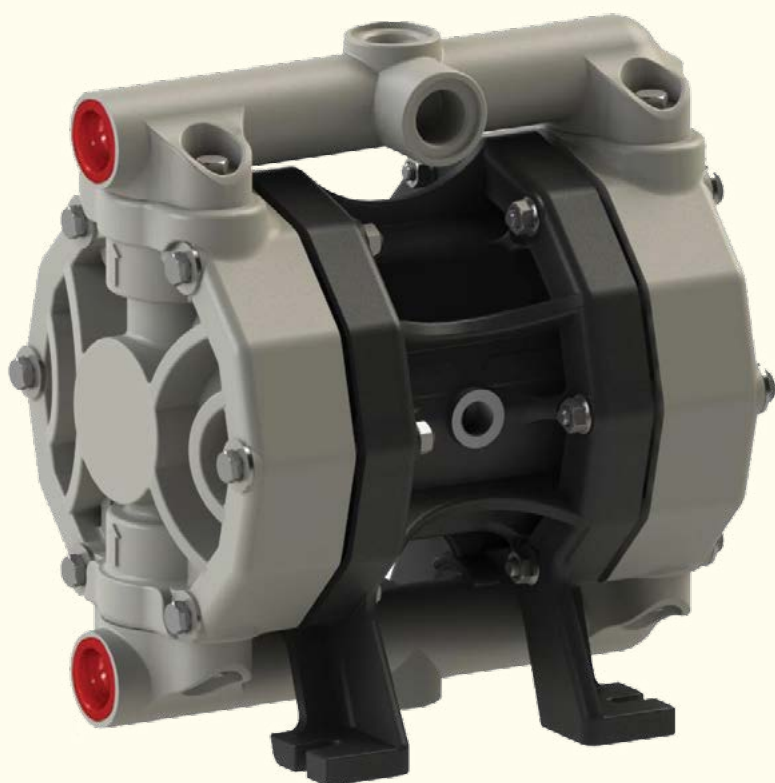
Pumps must be used in vertical position only.

Mod. AIR20/ADB/N - AIR20/ADB - AIR20/ADB/C - AIR20/ADB/C/F



Pos.	Q.ty	Mod.	Material	Description
1	1	AIR20/ADB/R1	PP	Central block
1a	2	AIR20/ADB/R1A	PP	Warhead
2	1	AIR20/ADB/R2	POM-C	Pneumatic exchanger
3	1	AIR20/ADB/R3	AISI	Shaft
3a	1	AIR20/ADB/R3A	NBR	O-ring shaft
5	2	AIR20/ADB/R5	STEEL	Belleville Washer
6	2	AIR20/ADB/R6	ALUMINUM	Air side cap
7a	2	AIR20/ADB/R7A	Hytrell	Air diaphragm
7b	2	AIR20/ADB/R7B	PTFE	Fluid diaphragm
8	2	AIR20/ADB/R8	PP+VTR	Fluid side cap
10	2	AIR20/ADB/R10	FELT	Silencer
11	2	AIR20/ADB/R11	PP+VTR	Pump casing
12a	1	AIR20/ADB/R12A	PP+VTR	Upper manifold
12b	1	AIR20/ADB/R12B	PP+VTR	Lower manifold
13	4	AIR20/ADB/R13	ECTFE	Ball cage wile

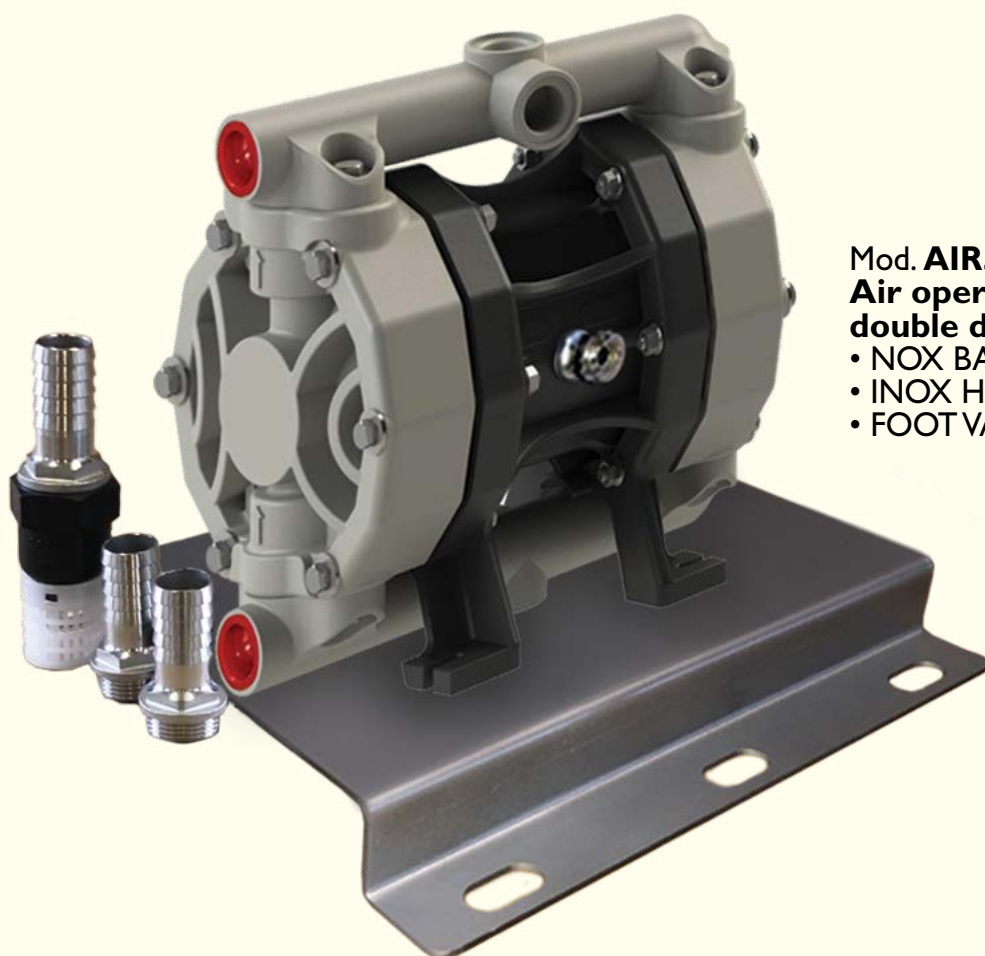
Pos.	Q.ty	Mod.	Material	Description
14	4	AIR20/ADB/R14	PTFE	Ball
15a	4	AIR20/ADB/R15A	PP	Ball seat
19	8	AIR20/ADB/R19	AISI	Screw manifold
19a	4	AIR20/ADB/R19A	AISI	Washers manifold
19b	8	AIR20/ADB/R19B	AISI	Nuts collector
21	4	AIR20/ADB/R21	AISI	Screw pump casing
21a	4	AIR20/ADB/R21A	AISI	Washers pump casing
21b	4	AIR20/ADB/R21B	AISI	Nuts pump casing
32	4	AIR20/ADB/R32	PTFE	Gasket upper
33	4	AIR20/ADB/R33	PTFE	Gasket lower
41	4	AIR20/ADB/R41	PTFE	Internal gasket seat
47	2	AIR20/ADB/R47	PP	Spacer
51	1	AIR20/ADB/R51	BRASS	Air connection
	1	AIR20/ADB/RKIT		Spare kit AIR20/ADB



Mod. **AIR55/ADB/N**
Air operated self-priming double diaphragm pump
(only the pump - no accessories)



Optional:
Mod. **AIR20-55/ADB/ST**
INOX wall fixing base



Mod. **AIR55/ADB**
Air operated self-priming double diaphragm pump

- NOX BASE
- INOX HOSE CONNECTORS
- FOOT VALVE

Flow rate with WATER: 40LPM

Different flow rates based on inlet air pressure, air consumption NI/min. and fluid densities

**Mod. AIR55/ADB/C**

Air operated self-priming double diaphragm pumps for AdBlue, water and water-mixable oil

Mod. AIR55/ANT/C

Air operated self-priming double diaphragm pumps for anti freeze and windscreen

- complete with 2.5m suction hose and filter
- 2.5m discharge hose
- manual nozzle and INOX base

**Mod. AIR55/ADB/C/F**

Air operated self-priming double diaphragm pumps for AdBlue, water and water-mixable oil

Mod. AIR55/ANT/C/F

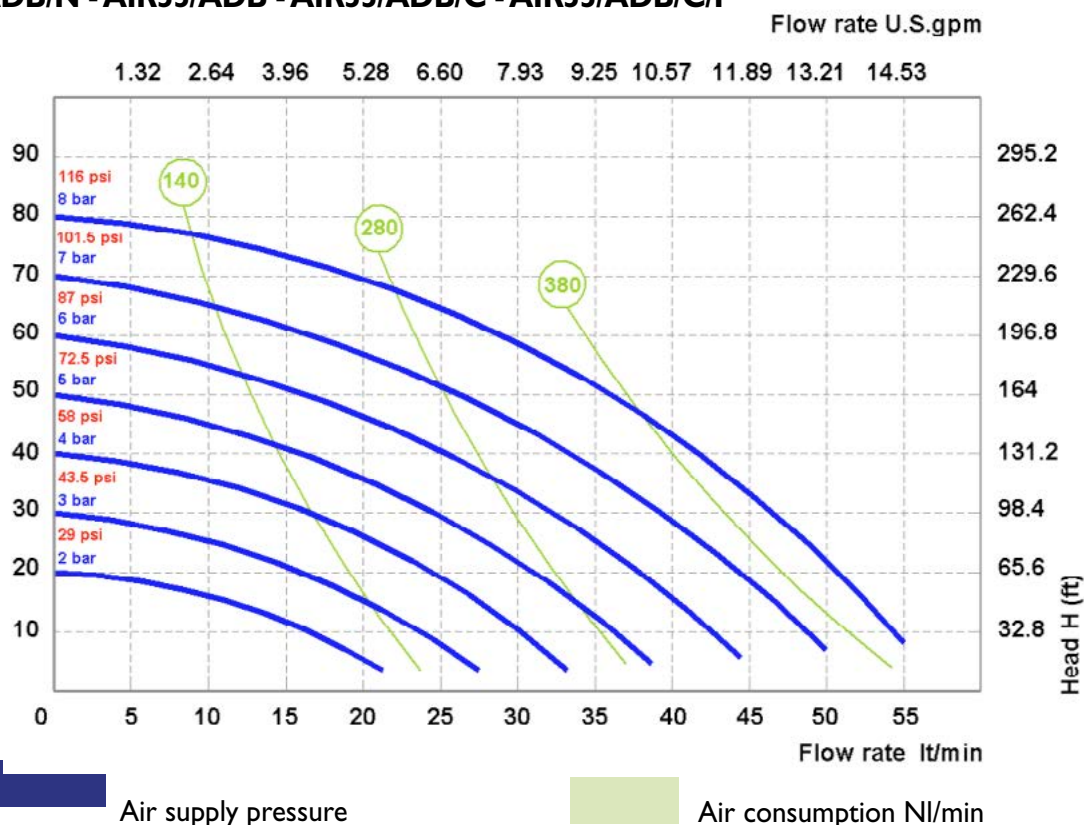
Air operated self-priming double diaphragm pumps for anti freeze and windscreen

- complete for 200L and 1000L IBC drums
- rigid suction pipe, 2" M fixing nut
- 2" F-56x4M and 2" F-70x6M adapters
- 2.5m discharge hose and manual nozzle

Flow rate with WATER: 35LPM

Different flow rates based on inlet air pressure, air consumption NI/min. and fluid densities

Mod. AIR55/ADB/N - AIR55/ADB - AIR55/ADB/C - AIR55/ADB/C/F

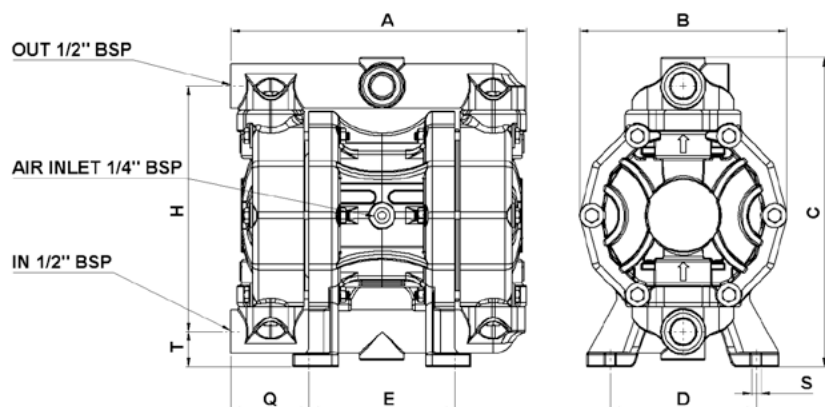


CASING polypropylene, **DIAPHRAGM** Hytrel+Ptfе, **BALLS** Ptfе, **SEATS** polypropylene, **GASKET** Ptfе

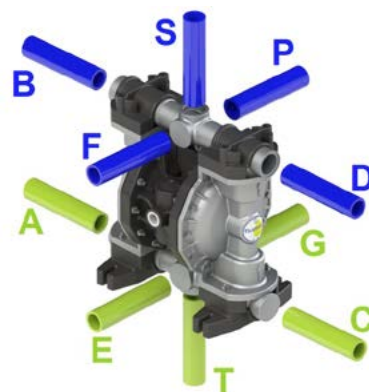
Technical data

FLUID CONNECTIONS: 1/2" BSP
AIR CONNECTION: 1/4" BSP
MAX FLOW RATE: 55 l/min
MAX AIR PRESSURE: 8 bar
MAX DELIVERY HEAD: 80 m
MAX SUCTION LIFT DRY: 6 m
MAX SUCTION LIFT WET: 9,8 m

MAX SOLID PASSING: 3.5 mm
NOISE LEVEL: 68dB
MAX VISCOSITY: 20.000 cps
ATEX zone 2: EX II 3/3 GD c IIB T I 35°C
WEIGHT: 4kg
MAX TEMPERATURE: 65°C
MIN TEMPERATURE: -4°C



A 222mm - B 153mm - C 233mm - D 110mm - E 110mm
H 185mm - Q 59mm - S 7mm - T 27mm

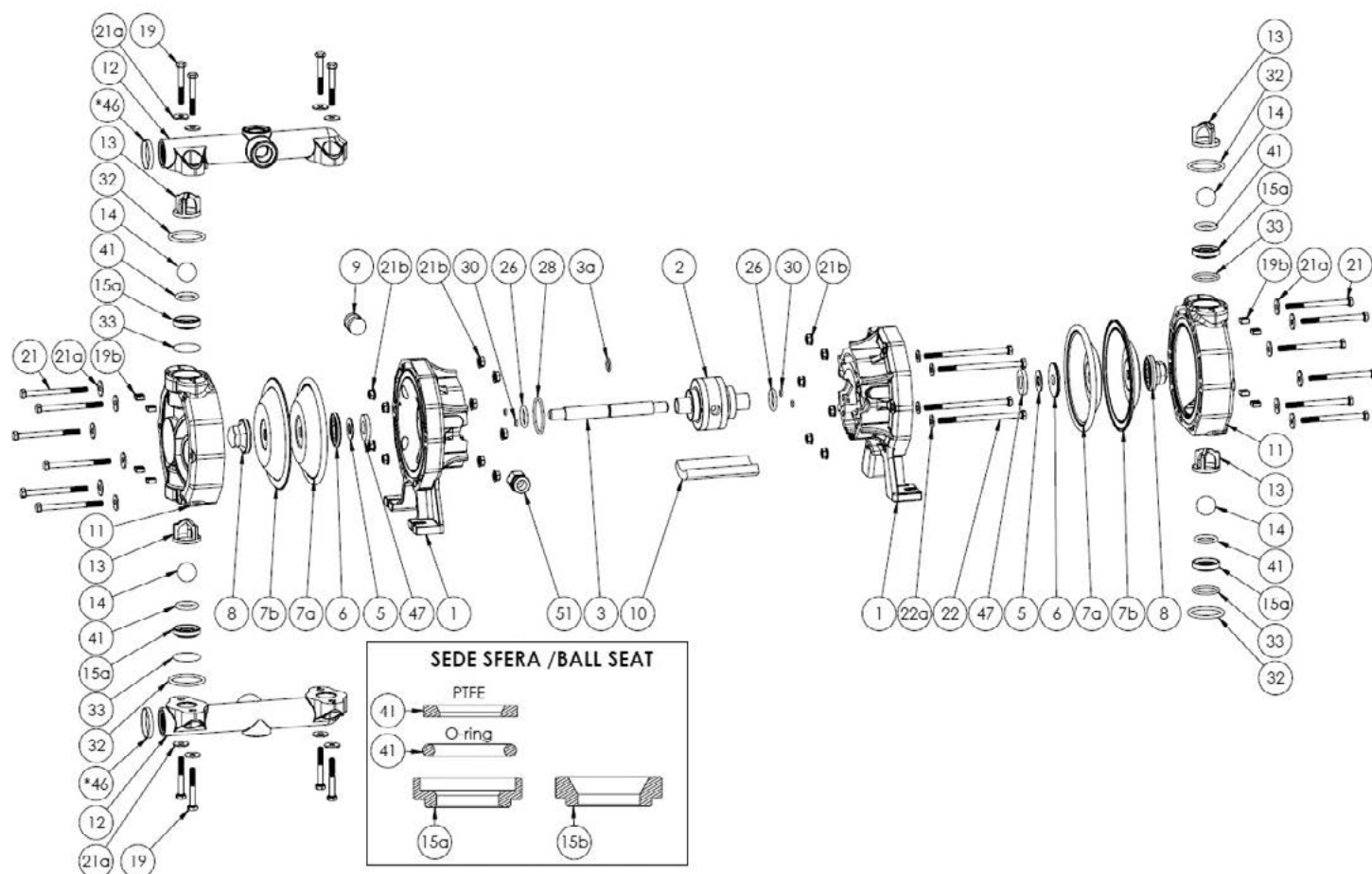


STANDARD: inlet A - outlet B
OPTIONAL: inlet: E T C G
outlet: F D P S

The curves and performance values refer to pumps with submerged suction and a free delivery outlet with water at 20°C, and vary according to the construction material. Hose connectors, hoses, nozzles, flow meters and other accessories reduce the nominal flow rate. Technical data are approximate and not binding for the manufacturer who reserves the right to change them without notice at any time.

Pumps must be used in vertical position only.

Mod. AIR55/ADB/N - AIR55/ADB - AIR55/ADB/C - AIR55/ADB/C/F



Pos.	Q.ty	Mod.	Material	Description
1	2	AIR55/ADB/R1	PP+VTR	Central half block
1A	2	AIR55/ADB/R1A	PP+CF	Central half block
2	1	AIR55/ADB/R2	POM-c	Exchanger
3	1	AIR55/ADB/R3	AISI	Shaft
3a	1	AIR55/ADB/R3A	NBR	O - ring shaft
5	2	AIR55/ADB/R5	STEEL	Belleville washer
6	2	AIR55/ADB/R6	ALUMINUM	Air side cap
7a	2	AIR55/ADB/R7A	Hytrel	Air diaphragm
7b	2	AIR55/ADB/R7B	PTFE	Fluid diaphragm
8	2	AIR55/ADB/R8	PP+VTR	Fluid side cap
9	1	AIR55/ADB/R9	PP	Stopper central half block
10	1	AIR55/ADB/R10	FELT	Silencer
11	2	AIR55/ADB/R11	PP+VTR	Pump casing
12	2	AIR55/ADB/R12	PP+VTR	Manifolds
13	4	AIR55/ADB/R13	PP+VTR	Cage
14	4	AIR55/ADB/R14	PTFE	Ball
15a	4	AIR55/ADB/R15A	PP	Ball seat
19	8	AIR55/ADB/R19	AISI	Screw manifold

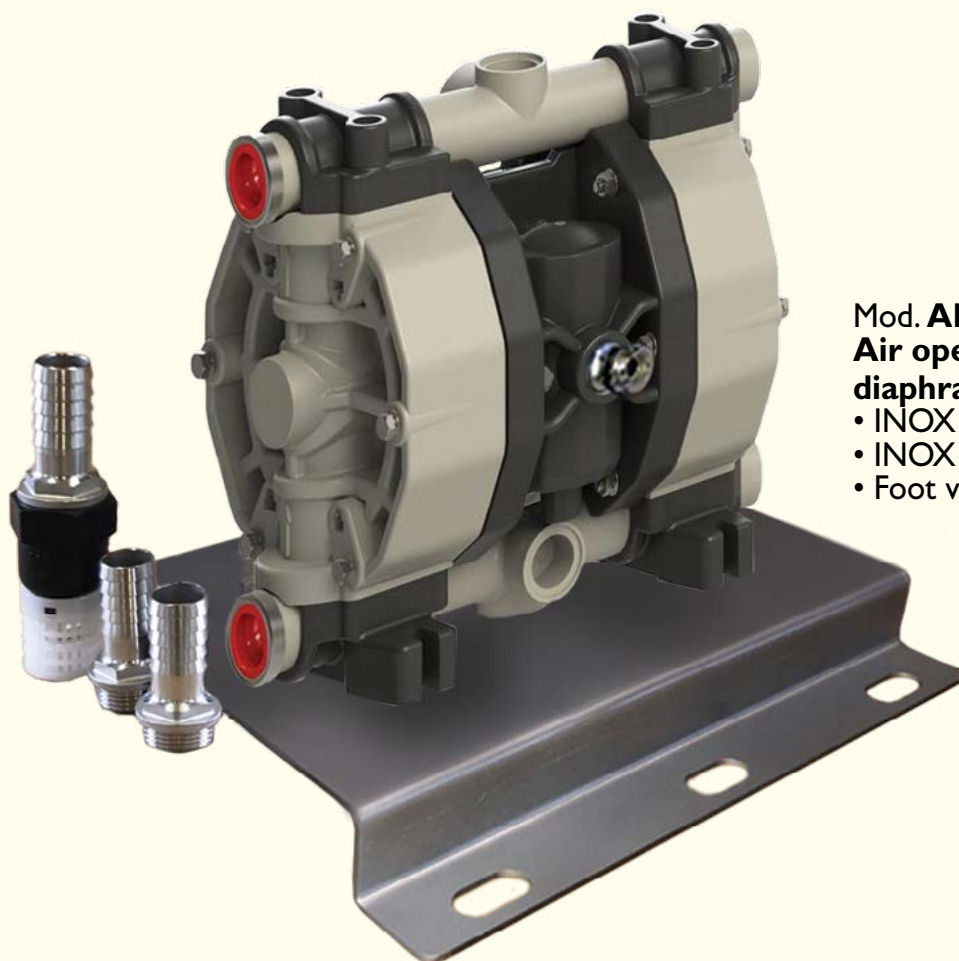
Pos.	Q.ty	Mod.	Material	Description
19b	8	AIR55/ADB/R19B	AISI	Nuts Manifolds
21	12	AIR55/ADB/R21	AISI	Screw pump casing
21a	20	AIR55/ADB/R21A	AISI	Washers
21b	16	AIR55/ADB/R21B	AISI	Nuts
22	4	AIR55/ADB/R22	AISI	Screw central half block
22a	12	AIR55/ADB/R22A	AISI	Washers central half block
26	2	AIR55/ADB/R26	NBR	O-ring
28	2	AIR55/ADB/R28	NBR	O-ring
30	4	AIR55/ADB/R30	NBR	O-ring
32	4	AIR55/ADB/R32	PTFE	Gasket upper
33	4	AIR55/ADB/R33	PTFE	Gasket lower
41	4	AIR55/ADB/R41	NBR	Internal o-ring seat
41A	4	AIR55/ADB/R41A	PTFE	Internal gasket seat
* 46	2	AIR55/ADB/R46	AISI	Reinforcing ring manifold
47	2	AIR55/ADB/R47	Pom-c	Stroke spacer
51	1	AIR55/ADB/R51	ALUMINUM	Air connection with O-ring
	1	AIR55/ADB/RKIT		Spare kit AIR55/ADB



Mod. AIRI 110/ADB/N
Air operated self-priming double diaphragm pump
(only the pump - no accessories)



Optional:
Mod. AIRI 110-170/ADB/ST
INOX wall fixing base



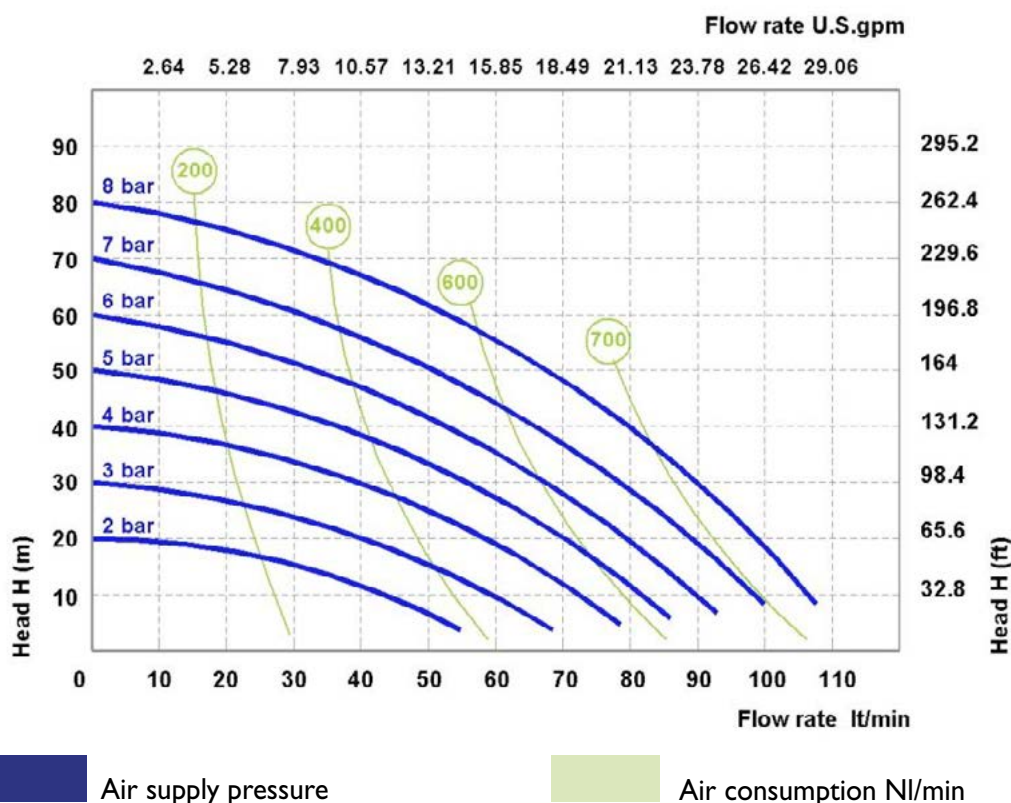
Mod. AIRI 110/ADB
Air operated self-priming double diaphragm pump

- INOX base
- INOX hose connectors
- Foot valve

Flow rate with WATER: 50LPM

Different flow rates based on inlet air pressure, air consumption NI/min. and fluid densities

Mod. AIR I 10/ADB/N - AIR I 10/ADB

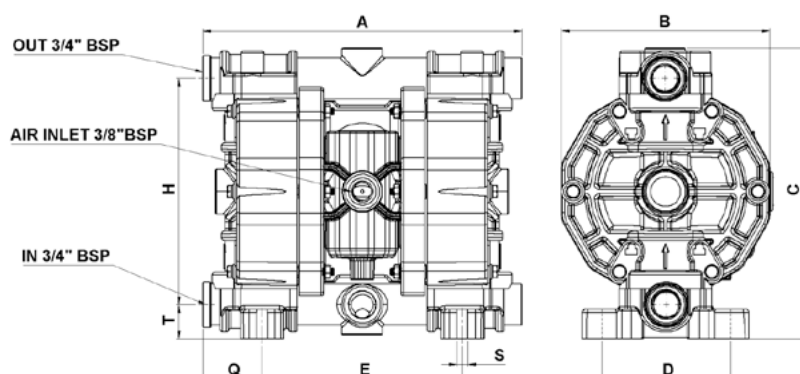


CASING polypropylene, **DIAPHRAGM** Hytrel+Ptfе, **BALLS** Ptfе, **SEATS** polypropylene, **GASKET** Ptfе

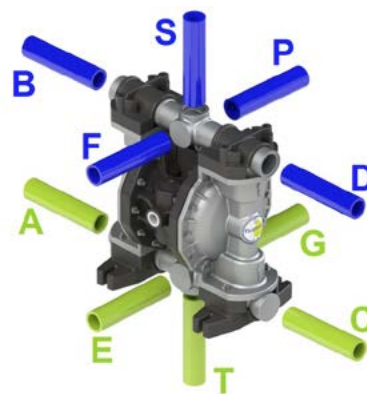
Technical data

FLUID CONNECTIONS: 3/4" BSP
AIR CONNECTION: 3/8" BSP
MAX FLOW RATE: 110 lt/min
MAX AIR PRESSURE: 8 bar
MAX DELIVERY HEAD: 80 m
MAX SUCTION LIFT DRY: 6 m
MAX SUCTION LIFT WET: 9,8 m

MAX SOLID PASSING: 3.5 mm
NOISE LEVEL: 72dB
MAX VISCOSITY: 25.000 cps
ATEX zone 2: EX II 3/3 GD c IIB T135°C
WEIGHT: 6.5kg
MAX TEMPERATURE: 65°C
MIN TEMPERATURE: -4°C



A 265mm - B 175mm - C 245mm - D 108mm - E 175mm
H 189mm - Q 50mm - S 9mm - T 29mm

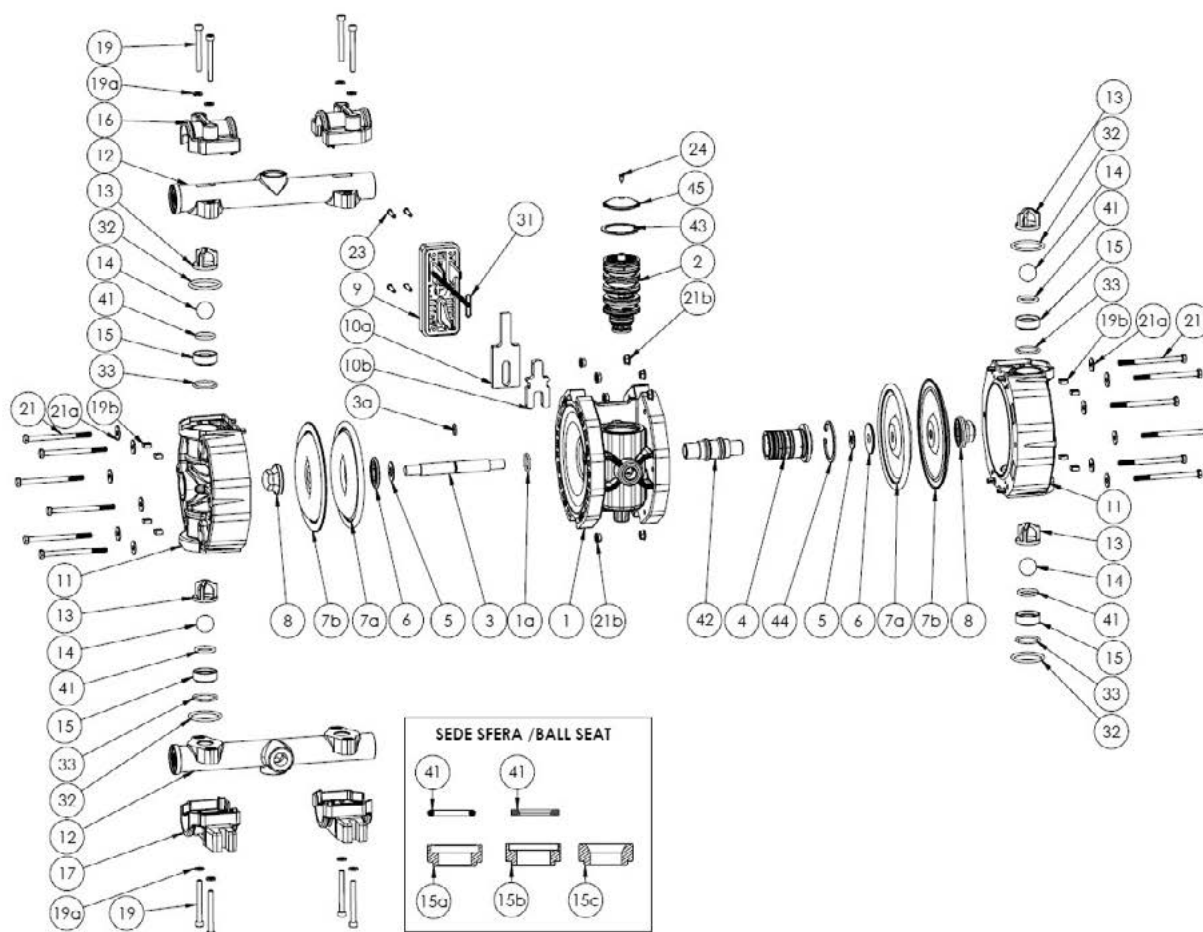


STANDARD: inlet A - outlet B
OPTIONAL: inlet: E T C G
outlet: F D P S

The curves and performance values refer to pumps with submerged suction and a free delivery outlet with water at 20°C, and vary according to the construction material. Hose connectors, hoses, nozzles, flow meters and other accessories reduce the nominal flow rate. Technical data are approximate and not binding for the manufacturer who reserves the right to change them without notice at any time.

Pumps must be used in vertical position only.

Mod. AIR I 10/ADB/N - AIR I 10/ADB



Pos.	Q.ty	Mod.	Material	Description
1	1	AIR I 10/ADB/R1	PP	Central block
1a	1	AIR I 10/ADB/R1A	NBR	O - ring
2	1	AIR I 10/ADB/R2	POM-c	Exchanger
3	1	AIR I 10/ADB/R3	AISI	Shaft
3a	1	AIR I 10/ADB/R3A	NBR	O - ring
4	1	AIR I 10/ADB/R4	POM-c	Diaphragm with O-ring
5	2	AIR I 10/ADB/R5	STEEL	Belleville washer
6	2	AIR I 10/ADB/R6	ALUMINUM	Cap
7a	2	AIR I 10/ADB/R7A	Hytre	Air diaphragm
7b	2	AIR I 10/ADB/R7B	PTFE	Fluid diaphragm
8	2	AIR I 10/ADB/R8	PP+VTR	Fluid side cap
9	1	AIR I 10/ADB/R9	PP+VTR	Silencer grid
10a	1	AIR I 10/ADB/R10A	FELT	External silencer
10b	1	AIR I 10/ADB/R10B	FELT	Internal silencer
11	2	AIR I 10/ADB/R11	PP+VTR	Pump Casing
12	2	AIR I 10/ADB/R12	PP+VTR	Manifolds
13	4	AIR I 10/ADB/R13	PP+VTR	Cage
14	4	AIR I 10/ADB/R14	PTFE	Ball
15b	4	AIR I 10/ADB/R15B	PP	Ball seat

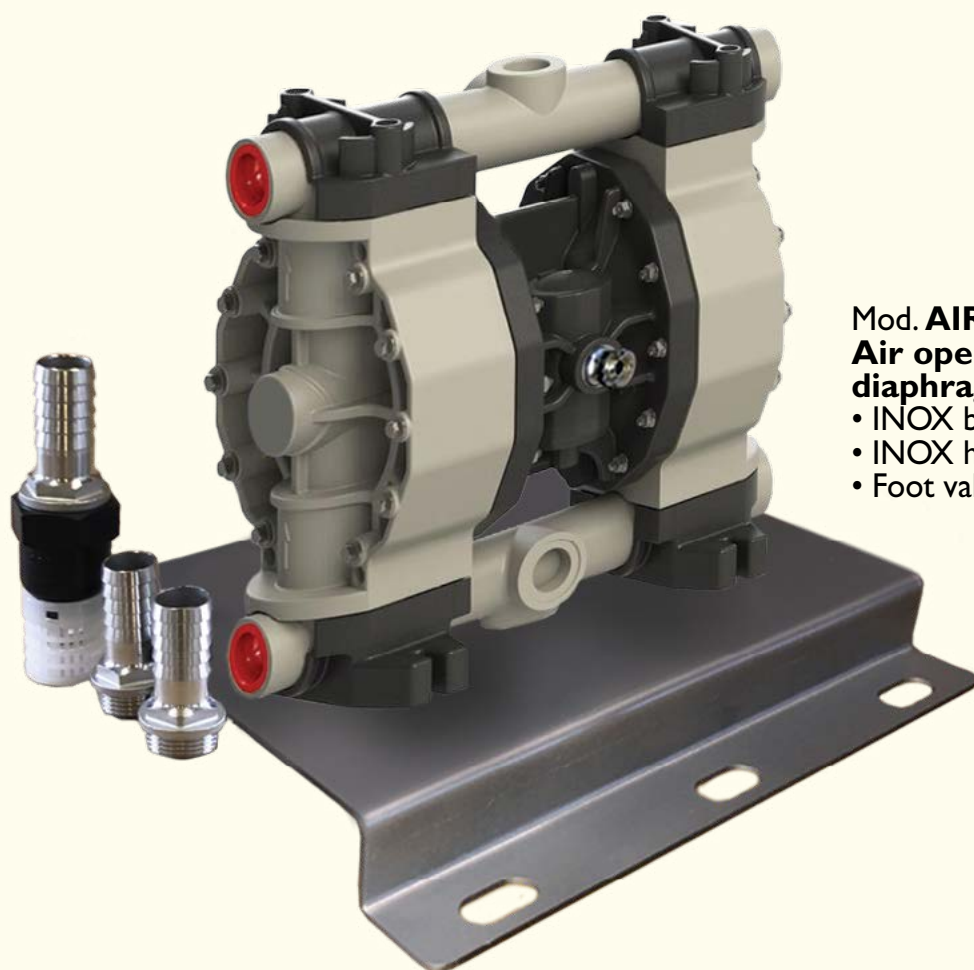
Pos.	Q.ty	Mod.	Material	Description
16	2	AIR I 10/ADB/R16	PP +VTR	Collar
17	2	AIR I 10/ADB/R17	PP +VTR	Foot
19	8	AIR I 10/ADB/R19	AISI	Screw manifold
19b	8	AIR I 10/ADB/R19B	AISI	Nuts manifolds
21	12	AIR I 10/ADB/R21	AISI	Screw pump casing
21a	20	AIR I 10/ADB/R21A	AISI	Washers
21b	12	AIR I 10/ADB/R21B	AISI	Nuts
23	4	AIR I 10/ADB/R23	AISI	Screw silencer grid
24	1	AIR I 10/ADB/R24	AISI	Screw cover exchanger
31	1	AIR I 10/ADB/R31	NBR	O-ring silencer
32	4	AIR I 10/ADB/R32	PTFE	Gasket upper
33	4	AIR I 10/ADB/R33	PTFE	Gasket lower
41	4	AIR I 10/ADB/R41	PTFE	Internal gasket seat
42	1	AIR I 10/ADB/R42	POM-c	Bushing with O-ring
43	1	AIR I 10/ADB/R43	STEEL	Seeger Exchanger
44	1	AIR I 10/ADB/R44	STEEL	Seeger Central block
45	1	AIR I 10/ADB/R45	PP+VTR	Cover exchanger
	1	AIR I 10/ADB/RKIT		Spare kit AIR I 10ADB



Mod. **AIRI 70/ADB/N**
Air operated self-priming double diaphragm pump
(only the pump - no accessories)



Optional:
Mod. **AIRI 10-170/ADB/ST**
INOX wall fixing base



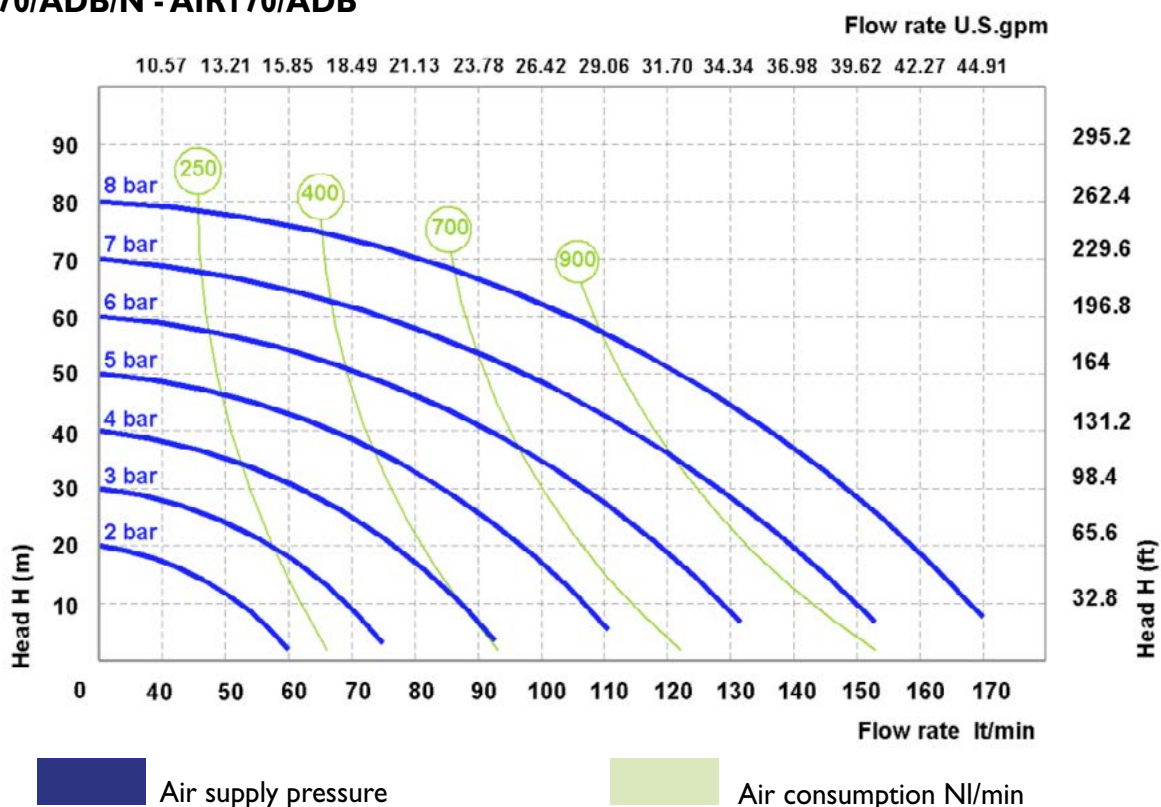
Mod. **AIRI 70/ADB**
Air operated self-priming double diaphragm pump

- INOX base
- INOX hose connectors
- Foot valve

Flow rate with WATER: 80LPM

Different flow rates based on inlet air pressure, air consumption NI/min. and fluid densities

Mod. AIRI 70/ADB/N - AIRI 70/ADB

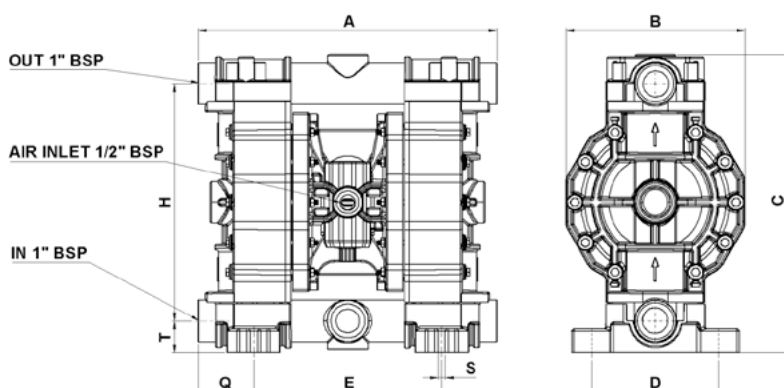


CASING polypropylene, **DIAPHRAGM** Hytrel+Ptfe, **BALLS** Ptfe, **SEATS** polypropylene, **GASKET** Ptfe

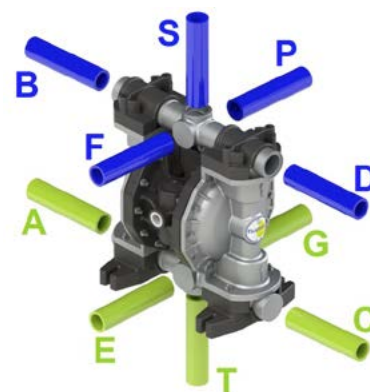
Technical data

FLUID CONNECTIONS: 1" BSP
AIR CONNECTION: 1/2" BSP
MAX FLOW RATE: 170 l/min
MAX AIR PRESSURE: 8 bar
MAX DELIVERY HEAD: 80 m
MAX SUCTION LIFT DRY: 6 m
MAX SUCTION LIFT WET: 9,8 m

MAX SOLID PASSING: 7,5 mm
NOISE LEVEL: 75dB
MAX VISCOSITY: 35.000 cps
ATEX zone 2: EX II 3/3 GD c IIB T1 35°C
WEIGHT: 15kg
MAX TEMPERATURE: 65°C
MIN TEMPERATURE: -4°C



A 370mm - B 222mm - C 370mm - D 157mm - E 233mm
H 294mm - Q 69mm - S 9mm - T 39mm

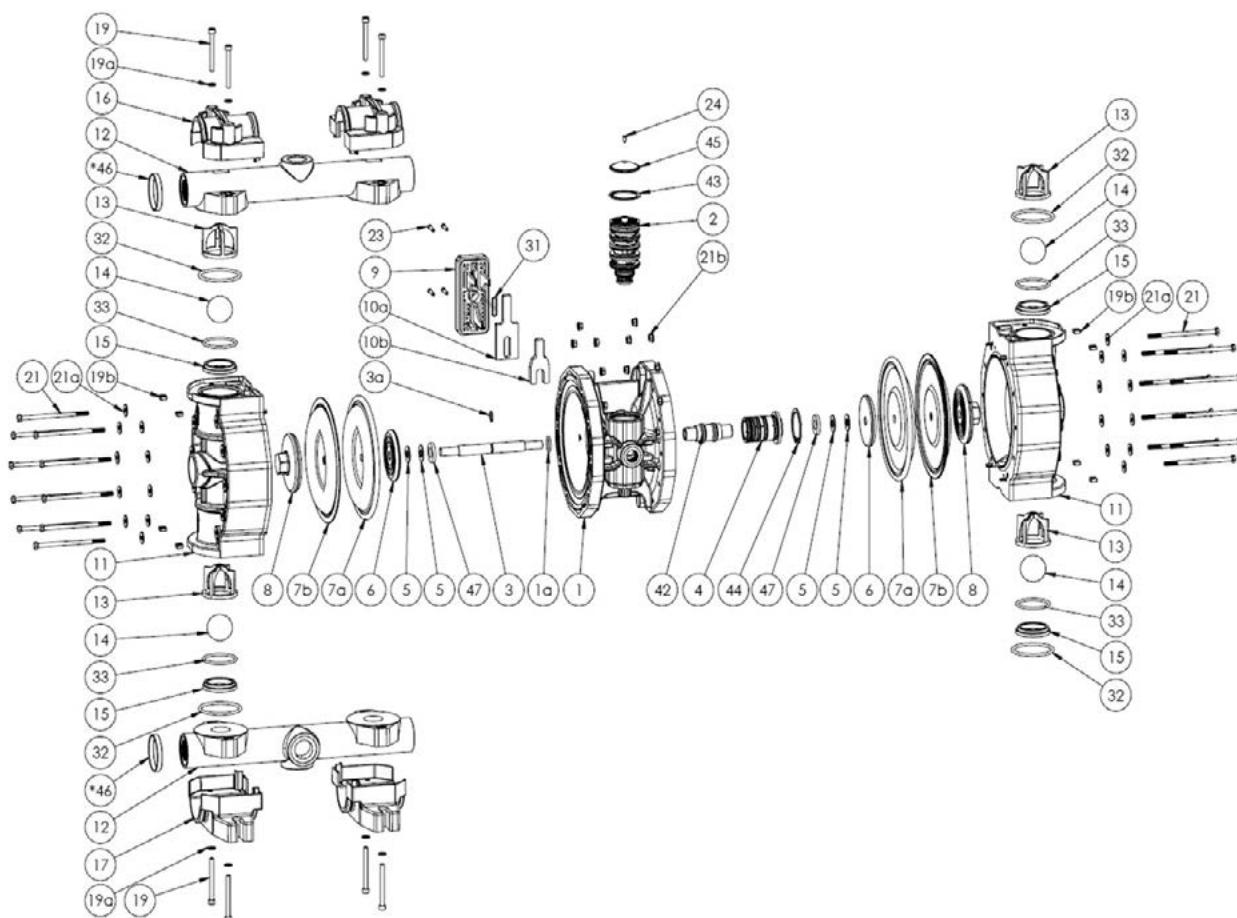


STANDARD: inlet A - outlet B
OPTIONAL: inlet: E T C G
outlet: F D P S

The curves and performance values refer to pumps with submerged suction and a free delivery outlet with water at 20°C, and vary according to the construction material. Hose connectors, hoses, nozzles, flow meters and other accessories reduce the nominal flow rate. Technical data are approximate and not binding for the manufacturer who reserves the right to change them without notice at any time.

Pumps must be used in vertical position only.

Mod. AIR170/ADB/N - AIR170/ADB



Pos.	Q.ty	Mod.	Material	Description
1	1	AIR170/ADB/R1	PP	New version central block
1a	1	AIR170/ADB/R1A	NBR	O-ring
2	1	AIR170/ADB/R2	POM-c	Exchanger
3	1	AIR170/ADB/R3	AISI	Shaft
3a	1	AIR170/ADB/R3A	NBR	O - ring shaft
4	1	AIR170/ADB/R4	POM-c	Plate with O-ring
5	4	AIR170/ADB/R5	STEEL	Belleville washer
6	2	AIR170/ADB/R6	ALUMINUM	Air side cap
7a	2	AIR170/ADB/R7A	Hytrek	Air diaphragm
7b	2	AIR170/ADB/R7B	PTFE	Fluid diaphragm
8	2	AIR170/ADB/R8	PP+VTR	Fluid side cap
9	1	AIR170/ADB/R9	PP+VTR	Grid with O-ring
10a	1	AIR170/ADB/R10A	FELT	External silencer
10b	1	AIR170/ADB/R10B	FELT	Internal silencer
11	2	AIR170/ADB/R11	PP+VTR	Pump casing
12	2	AIR170/ADB/R12	PP+VTR	Manifolds
13	4	AIR170/ADB/R13	ECTFE	Cage
14	4	AIR170/ADB/R14	PTFE	Ball
15	4	AIR170/ADB/R15	PP	Ball seat
16	2	AIR170/ADB/R16	PP +VTR	Collar

Pos.	Q.ty	Mod.	Material	Description
17	2	AIR170/ADB/R17	PP +VTR	Foot
19	8	AIR170/ADB/R19	AISI	Screw manifold
19a	8	AIR170/ADB/R19A	AISI	Washers
19b	8	AIR170/ADB/R19B	AISI	Nuts manifolds
21	20	AIR170/ADB/R21	AISI	Screw pump casing
21a	20	AIR170/ADB/R21A	AISI	Washers
21b	20	AIR170/ADB/R21B	AISI	Nuts body central block
23	4	AIR170/ADB/R23	AISI	Screw silencer grid
24	1	AIR170/ADB/R24	AISI	Screw cover exchanger
31	1	AIR170/ADB/R31	NBR	O-ring silencer
32	4	AIR170/ADB/R32	PTFE	Upper O-ring
33	4	AIR170/ADB/R33	PTFE	Gasket lower
42	1	AIR170/ADB/R42	POM-c	Bushing with O-ring
43	1	AIR170/ADB/R43	STEEL	Seeger Exchanger
44	1	AIR170/ADB/R44	STEEL	Seeger Exchanger
45	1	AIR170/ADB/R45	PP+VTR	Cover exchanger
*46	2	AIR170/ADB/R46	AISI	Reinforcing ring
47	2	AIR170/ADB/R47	PP	Stroke spacer
	1	AIR170/ADB/RKIT		Spare kit AIR170/ADB



Mod. 220DT/BASE
Containment tank for 125L and 220L
transportable tank

External dimensions: 87x67x55cm

Internal dimensions: 81x61x45cm

Weight: 50kg



CONTAINMENT TANK FOR TRANSPORTABLE TANK



Mod. 430DT/BASE
Containment tank for 430L
transportable tank
External dimensions: 127x86x55cm
Internal dimensions: 121x80x43cm
Weight: 75kg

(drums not included)



Mod. **BASE1000**
Steel tank base
for one 1000L IBC DRUM
Capacity: 1000L - Dimensions: 1220x1320x710mm
Weight: 155Kg

(drums not included)



Mod. **BASE1000PL**
Plastic tank base
for one 1000L IBC DRUM
Capacity: 1050L - Dimensions: 1350x1350x970mm
Weight: 90Kg



NEW E-MAIL ADDRESS

GENERAL

info@maestrisrl.com

SALES OFFICE ITALY

vendite@maestrisrl.com

TECHNICAL OFFICE

ufficiotecnico@maestrisrl.com

EXPORT DEPARTMENT

export@maestrisrl.com

ACCOUNTING

contabilita@maestrisrl.com

MAESTRI s.r.l.

VIA PIACENZA, 31

43126 PARMA (Italy)

Ph. +39 0521 993741 - Fax +39 0521 994671

E-mail: info@maestrisrl.com - www.maestrisrl.com

MAESTRI

OFFICINE MECCANICHE

MECHANICAL EQUIPMENT